

THE WAYNE HERALD

WAYNE, NE 68787 MONDAY, MARCH 2, 1992 — 116TH YEAR — NO. 41 THIS ISSUE — 1 SECTION, 8 PAGES LOCAL DELIVERY 25¢ — NEWSSTAND 45¢

At a Glance

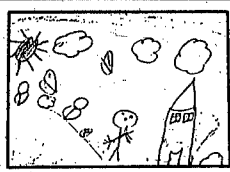
Blood bank

WAKEFIELD - The Siouland Blood Bank will visit the Wakefield Legion Hall Wednesday, March 4 from 9 a.m. to 3 p.m.

Teacher day

AREA - Tuesday, March 3 is teacher appreciation day in all the Wayne Herald coverage area schools. On that day, parents and students are encouraged to recognize teachers in some small way.

On that day, teachers are also invited to a continental breakfast at the middle school library at 7:45 a.m.



Nichole Wagner, 7
Winside School

Extended Weather Forecast:
Monday through Wednesday,
chance of showers Tuesday
and Wednesday; mild; highs,
mid-50s to lower-60s; lows,
mid-30s to lower-40s.

Info sought on U.S. flag in courthouse

WAYNE - The Wayne County Veterans Service Office is seeking historical information about the United States flag which is on display in the lobby of the Wayne County Courthouse.

To relay information, contact Wayne Dunklau at the Wayne County Veterans Service office. The office's number is 375-2764.

Break hours scheduled for WSC rec center

WAYNE - The Wayne State College Recreation Center has announced its hours for the college's spring break.

Hours will be 1-6 p.m., Saturday and Sunday, March 7-8; 11 a.m. to 7 p.m., Monday through Friday, March 9-13; and 1-6 p.m., Sunday, March 15. The Recreation center will be closed Saturday, March 14. The pool will be closed throughout the break.

Normal hours resume Monday, March 16.

Tickets available for Black and Gold show

WAYNE - Public tickets for Wayne State College's final Black and Gold Series program, pianist Minoru Nojima, go on sale Thursday, March 5 in the business office of the Hahn Administration Building.

Tickets, \$5 for adults and \$3 for high school age or younger. The performance will be March 24.

For more information, call 375-7517.

Promotion reminder for Wayne Chamber

WAYNE - Businesses that have not yet been contacted to take part in the 1992 Wayne Area Chamber of Commerce promotion "Shopping in Wayne, It Just Makes Cents" are encouraged to contact the chamber office immediately.

The Wayne Area Chamber of Commerce's number is 375-2240.

Affiliation meeting on tap for rural school

WAYNE - All parents and landowners in School District 57 are invited to attend the school board meeting Tuesday, March 3 at 8 p.m. at the school house.

The purpose of the meeting is to discuss district affiliation. Public input is needed.

WEB meets Monday at West Elementary

WAYNE - The Wayne Elementary Boosters will hold a meeting today (Monday) at 7 p.m.

The purpose of this meeting is to plan for the Wayne Elementary Schools' spring carnival.

USWest makes \$30,000 donation to Wayne State

The Wayne State Foundation has received a \$30,000 grant from USWest Communications that will be used to fund the college's Bureau for Community and Economic Development.

USWest has provided funding for the bureau, which serves northeast Nebraska community and economic development needs, since its inception on campus in 1990.

"We appreciate USWest's generous support," says Dr. Donald J. Mash, president of Wayne State College. "Their funding enables us to more effectively pursue the regional development mission of Wayne State College."

Bureau Director Connie Keck says the bureau is helping communities by directing them to agencies and resources that can assist them with development needs. If Wayne State is unable to help, community leaders are directed by the bureau to other agencies that

can answer questions and solve problems.

KECK SAYS the bureau works closely with the Department of Economic Development field office, the Nebraska Business Development Center, and the Small Business Institute, which are all located on the Wayne State campus.

"Before the bureau was established, some communities didn't know how or where to inquire about assistance, or they didn't even realize Wayne State was ready and willing to assist," she says.

USWest officials say they support the bureau because they believe strongly in rural development.

"We are pleased to be part of this consortium," says Jim Hawes, vice-president and chief executive officer of USWest Communications in Omaha. "We are working to better the quality of life in northeast Nebraska and we regard the bureau as a prime part of that effort."

Options take shape for JDC

By Mark Crist
Managing Editor

Changes are likely to take shape if the juvenile detention program serving northeast Nebraska remains in Wayne County.

That was the word from David Lynn of David M. Griffith Associates of York Wednesday during an all-county board meeting for the juvenile detention program. Lynn was hired by the Wayne County Commissioners in January to conduct a feasibility study of the JDC.

Lynn, a consultant focusing on public institutions, has been hired

by the Wayne County Board of Commissioners to conduct a study to determine the feasibility of operating the Wayne County JDC. Lynn presented his initial report at the meeting.

THE STUDY was deemed necessary following the Wayne County Commissioners' 2-1 vote to close the facility. The commissioners withdrew funding and site support in November due to a rash of escapes, leaving the future of the Wayne County JDC hazy. If nothing changes, the facility will close at the end of June.

"This organization is simply an association with no laws and no by-laws and no governing board," Lynn told the audience of officials representing 18 counties and two reservation tribes. "... We need to determine the (facility's) short and long range goals."

In his report, Lynn said three alternatives exist. One is to create the true structure of an interlocal agreement. The second is to maintain the operation the way it currently is run. And the third is to have no facility in Wayne and locate it elsewhere. He said he thinks the change should be made

to an interlocal government, similarly to the way Region IV is operated, thus leaving the facility in Wayne.

SOME OF THE problems Lynn found in the current operation of the center deals with costs and the time Wayne County Sheriff LeRoy Janssen spends on operating the facility. Lynn said the sheriff estimated that he spends 85 percent of his time running the facility.

One of the main problems deals with management, Lynn said. Un-

See JDC, page 3



Photography: Mark Crist

Randolph man dies in accident

An one-vehicle accident Thursday around 10 p.m. claimed the life of a rural Randolph man.

James A. Rohde, 43, of rural Randolph was killed when he lost control of the vehicle he was driving 2 1/4 miles west of Wayne on Highway 35. There were no other passengers in the vehicle.

ACCORDING TO the Nebraska State Patrol office in Norfolk, the vehicle rolled 1 1/2 times before coming to a rest on its top.

Officials with the State Patrol said Rohde was transported to Providence Medical Center and then transported to Marian Health Center in Sioux City, where he died around 3:30 a.m.

Incumbents file papers

Four incumbents beat the Thursday deadline by filing for re-election to office.

Among those filing prior to deadline was Stanley C. Hansen, who filed for re-election to his city council seat Feb. 26. Hansen, who represents the first ward, is seeking his third term.

Dean W. Mann filed for re-election Feb. 25 to seek a third term to the Winside School District 95R board. If re-elected, he will serve for four years.

Pat Brudigan filed for re-election to the Hoskins Village Board Feb. 25. If re-elected, she will be serving her fourth term.

The final incumbent filing was made Feb. 27 when Connie R. Bargstadt filed for her second term on the Winside School District 95R board.

Puppy love

SATTIE SHEPHERD FOUND A NEW FRIEND Thursday while she was out for a walk with her mother on the Wayne State College campus. This little puppy, belonging to Steve Kessler, didn't seem to mind the attention, either. With unseasonable temperatures, many people could be found outdoors enjoying the nice weather.

Police look to keep record in tact

By Mark Crist
Managing Editor

Wayne looks to continue its track record of having the lowest reported crime rate in the state for first class cities.

"We have an aggressive department with officers who are always on the lookout," Wayne Police Chief Vern Fairchild said. "We are also fortunate because we have citizens out there willing to report incidents and we live in a community that's off the beaten path."

In a 1991 summary Fairchild reported to the Wayne City Council Tuesday night, the Wayne Police Department made 79 arrests in 1991, compared to 105 in 1990. In 1991, 59 adults and 20 juveniles were arrested for crimes other than traffic citations.

A BREAKDOWN OF crimes lists one felony assault and 18 misdemeanor assaults. In 1991, there were six reported stolen vehicles. The reported loss tallied \$3,400 and a like amount was recovered.

One-hundred eight theft reports were also made. The reported theft loss in Wayne totalled \$26,829.38. Property recovered totalled \$16,665.

The report listed no homicides, rapes or robberies in Wayne during 1991. That compares with a like amount in 1990, with the exception of one rape, recorded as unfounded.

"Most homicides any more, and to a great extent, occur where people know each other," Fairchild said. "We're fortunate to get calls

from the public when disturbances occur and it allows us to put a dampener on situations before they get out of hand. We also have a good working relationship with Haven House. That helps."

Haven House is a local center for battered and abused women, which provides safe havens upon request.

NEXT TO larceny, burglary and vandalism increased in 1991. For

See RECORD, page 3

Bankers see loans as boost to economy

By Mark Crist
Managing Editor

Wayne banks aren't quick to throw good money after bad, but neither are consumers, local presidents say. That is why the area economy remains strong.

And that's in spite of the negatives which have struck the banking industry: the recession, the Savings and Loan fiasco, lower returns on investments, and depleted funds in the federal reserve. Most Wayne bank presidents agree that despite the negative things, it's easier today than ever to get a loan.

"The opportunity to get loans is just as easy as it ever has been," says State National Bank President Robert Jordan. "The places where banks got in trouble was with the long-term loans, like real estate and home mortgages. That's especially what got the S&Ls in trouble."

ALL THREE bank presidents said they look carefully at the con-

sumers' ability to repay the loans as well as what collateral is available. Each president says they aren't as willing to make unsecured loans as they used to unless customers carry a low debt load and have a strong base.

Bob Reeg, president at First National Bank, says one of the first things he looks for is whether customers have a relationship with the bank. He says despite the recent credit crunch, there's been a misperception that it's more difficult to get a loan.

"You don't see many signature-type unsecured loans anymore," Reeg says. "The major thing we look at is income and source of the income; how stable it is. Employment history and how long the customer has been at one location is extremely important and credit history is very important, also."

As far as credit history, banks look at both local debts and the ability to repay them and what capacity customers have in repaying

What to be prepared for when banks look at loans

In every instance, banks look at four things called the "C's of Credit." The following entails what they are.

- Capacity to repay: Someone who has a heavy debt may be in jeopardy of timely repayment.
- Collateral: Banks want something which will safeguard them in the event a customer defaults.
- Past credit: If a customer shows they have a strong history of repaying debt on time and according to service requirements, they have strong credit.
- Character: Even if customers qualify with the other "C's" of credit, they may have a history of poor standing in the community. If any of the "C's" of credit are missing, customers may not be able to get a loan.

reported debts, like car loans and home loans, as well as credit card debts.

CREDIT REPORTS usually tell banks how good customers are about repayment. For instance, the

report outlines how many bills are being paid on time and how many aren't.

If a credit report shows whether a consumer has a high debt load can be bad for someone seeking a loan. At any rate, if a consumer is

denied a loan, law requires banks to list reasons for denial.

Tim Keller, president at Farmers and Merchants State Bank, says while loans are made regularly, there are some new restrictions following the S&L crisis. For instance, all real estate loans are required to have an appraisal done. Before the change, the bank could have determined property value in most instances.

"If a consumer applies for a loan, policies for granting loans have to be consistent," Keller says. "With interest rates going down, that doesn't necessarily affect the bottom line of a bank. There's pressure from non-bank competition out there trying to take advantage of low interest rates in their marketing ... but what they don't mention is the risk. Rate and risk are brother and sister. Risk is something banks try to avoid."

THE MOST common loans made are personal or consumer

See BANKS, page 3

Credit info

In the event a consumer wants to know what his or her credit history is, they can contact credit bureaus and find out what their reports say.

If something on a credit report is incorrect, it can be challenged and occasionally removed. Sometimes, when a report says a person has bad history, it stays on the report for about 10 years.

If a loan is denied, credit reports are available from credit bureaus if contacted within the first 60 days. If not contacted, the cost is \$10 to have a credit report done up. Credit bureaus have 30 working days to correct or verify bad credit.

Credit bureaus are located in Sioux City and Norfolk.

To construct new church

Wayne men join mission trip to Guatemala

By LaVon Anderson
Assistant Editor

A recent trip to Guatemala for three Wayne men has yielded a lifetime of memories and reaffirmed their belief in the goodness of mankind and the spirit of Christian brotherhood.

The three, Roger Fuoss, Chuck Thiele and Chuck Arickx, returned home Feb. 12 after spending 10 days in the Central American republic where they helped residents of San Pedros construct a new church.

Their trip was part of the Mobilization and Placement Service (MAPS) of the Assembly of God Churches nationwide and was funded through the generosity of relatives and friends, including members of the Wayne World Outreach Center to which all three belong.

"OUR BIGGEST reward was in seeing how grateful these people were," said Arickx, who is employed as a production designer in the drafting department at Heritage Homes in Wayne.

Arickx, along with Fuoss, who farms northwest of Wayne, and Thiele, who is employed by Peoples Natural Gas Co. in Wayne, left Feb. 3 for Guatemala and were joined by 12 members of the Bellevue, Neb. Christian Center.

Members of the Bellevue Christian Center had raised the necessary funds, approximately \$6,000, to purchase the land and construct the church in San Pedros.

"We were quite a group," smiles Fuoss, adding that the only requirement for taking part in the missionary project was a willingness to work.

The group of Nebraskans traveling to Guatemala was comprised of four women and 11 men from all walks of life, including a farmer, computer programmer, draftsman, lawyer, beautician, maintenance worker and retired Union Pacific Railroad employee.

"None of us were necessarily 'qualified' for the job," adds Fuoss.

THIELE SAID the request for the new church was made by Ronnie Mask, an Assembly of God missionary in Guatemala.

The congregation, which the three estimate at approximately 65 members, had been renting a building for worship services and

had outgrown the facility.

"Their income is very low and the cost of a new church would be astronomical when compared to what they make," said Arickx.

"Financially, they are much poorer than we are," added Thiele, "but they have many things that we seem to have lost over the years. They still find pleasure in the little things that don't cost money."

"I've talked to people who lived during the depression and they say they had nothing but they were happy. That's how I would describe the people of Guatemala."

THE NEBRASKA representation first landed in Guatemala City and spent the night there before traveling approximately 100 miles northwest to Quetzaltenango where they were met by Missionary Mask.

The missionary accompanied them on to San Marcos, located next to San Pedros, where they spent the next four days while the church was being constructed.

Assisting with the construction were Missionary Mask and approximately five to 10 locals each day.

"It was hard work," smiles Fuoss, adding that the group began work each morning at about 8 a.m. and worked steadily until about 6 p.m.

"I'm used to climbing in and out of machinery, but this was total exhaustion," smiles the Wayne farmer. "I think we were all in bed by 8 o'clock every night."

ALTHOUGH the church was located within the city limits, Thiele said it was bordered on one side by a cornfield and on the other by a squash patch.

"The church itself is a very simple structure," said Arickx, adding that it measures 28' x 55' and is a concrete block structure with wooden truss rafters and a tin roof.

"We mixed the cement by hand, but we did have a power saw," said Fuoss, adding with a smile, "we even finished the wiring."

"It was very modest wiring," laughs Thiele, "but it was safe."

The three said local church members will complete the building, including installing windows and doors and laying a tile floor, with stucco inside and out.

THE FIRST worship service in the new church was held on the very

day it was completed. "We finished on Saturday afternoon and the dedication service was held that night," said Thiele, adding that there was a lot of clapping and excitement.

"There were as excited to get that building as we would be to get a \$50,000 Mercedes. The church is a big, big part of their lives."

As a thank you from the congregation, each of the Nebraskans was presented a handmade poncho in appreciation of their volunteer work.

"I was very much drawn to the people of Guatemala," says Fuoss, adding that he learned before making the trip that baseball caps were a hot item in Guatemala.

"I took about 100 caps that I had collected through the years and gave them all out. It was fun to watch the people respond. It was like I gave them \$100."

ALL THREE Wayne men said they were very much taken by the country and by the beautiful handwork of a very labor intensive people.

Before returning to the United States the group took a few days to visit several places of interest, including the Maya Ruins, along with blanket, doll and sweater factories.

"Almost everything there is handmade in bright, bright colors," said Fuoss, adding that because Guatemala is so heavily inhabited and wages are so low, it's cheaper to hire people to do the work than to use machines.

THE THREE say they are extremely grateful for the opportunity to help the people of Guatemala.

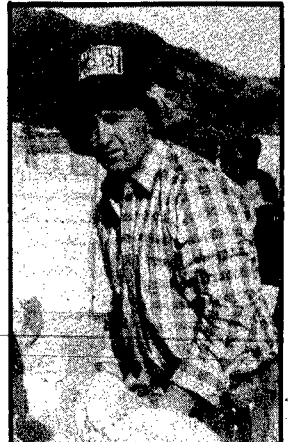
"It was an opportunity to help some of our Christian brothers," says Fuoss, adding that with the financial support and prayers from relatives and friends he truly felt like a missionary.

"I was touched by seeing how grateful these people were to have a place to meet and worship," said Arickx. "We didn't construct a fancy building, and yet they were so grateful."

"I was moved by the warmth and love the people of Guatemala have for each other, for God, and



Wayne residents Chuck Thiele, Roger Fuoss and Chuck Arickx, from left in top photo, are pictured with some of the souvenirs they brought home from Guatemala. The three joined a group from the Bellevue, Neb. Christian Church on a 10-day missionary trip to Guatemala, where they constructed an Assembly of God church in the city of San Pedros. The 28 x 55-foot structure was completed in four days and will serve as a worship center for approximately 65 members of the congregation. The bottom left photo is a picture of the church during construction. Also pictured below is Thiele at work during the building process.



for us," echoes Thiele. "We went there to be a blessing to them, but I think we were blessed more."

Thiele, Fuoss and Arickx will share their experience on Sunday, March 1 during the 10 a.m. worship

service at Wayne World Outreach Center. The public is invited to attend.



Malmbergs marking 40th

FRIENDS AND RELATIVES of Arvid and Willadene Malmberg of Norfolk, formerly of the Allen area, are invited to remember them on their 40th wedding anniversary with a card shower. Their address is 1409 Sheridan Dr., Norfolk, Neb., 68701. Malmbergs were married March 8, 1952 at the Springbank Friends Church near Allen. The card shower is requested by their children and grandchildren.

Community Calendar

- MONDAY, MARCH 2**
Confusable Collectables Questers Club, Donna Shufelt
American Legion Auxiliary, Vet's Club room
Acme Club paper sack luncheon and joke day, Joann Temme, 12:30 p.m.
- TUESDAY, MARCH 3**
Sunrise Toastmasters Club, City Hall, 6:30 a.m.
Hillside Club, Lydia Thomsen, 1:30 p.m.
Villa Wayne Tenants Club weekly meeting, 2 p.m.
Tops 782, St. Paul's Lutheran Church, 6 p.m.
Central Social Circle supper, Black Knight, 6:30 p.m.
Wayne PEO Chapter AZ, Debi Bonds, 7:30 p.m.
- WEDNESDAY, MARCH 4**
Job Training of Greater Nebraska representative at Chamber office, 10 a.m. to noon
Alcoholics Anonymous, Wayne State College Student Center, noon
Presbyterian Women, 2 p.m.
Tops 200, West Elementary School, 6:30 p.m.
Alcoholics Anonymous, Fire Hall, second floor, 8 p.m.
Al-Anon, City Hall, second floor, 8 p.m.
- THURSDAY, MARCH 5**
Logan Homemakers Club, Amanda Meyer

Nutritional health checklist, eating right guidelines available at senior center

Older adults can now track their nutritional health with a new checklist available from the Wayne Senior Center.

The "Determine Your Nutritional Health" checklist and eating right guidelines were launched during the week of Feb. 24 through March 1, with Governor Ben Nelson proclaiming the week as "Check Your Nutrition Week" in Nebraska.

"We know that persons who eat their noon meals at our senior center are getting the proper mix of nutrients for that meal," said Georgia Janssen, coordinator of the Wayne Senior Center. "However, that's only one meal a day. The checklist allows a person to determine his overall nutritional health, taking into account all meals and snacking."

THE CHECKLIST asks questions regarding the number of meals eaten each day, whether or not a person eats alone, and how many

fruits and vegetables a person eats, among other things.

The guidelines offer suggestions for improving nutritional health.

The checklist is made possible through the Nutrition Screening Initiative, the Nebraska Department on Aging, and Northeast Nebraska Area Agency on Aging.

The Nutrition Screening Initiative is a joint project of the American Academy of Family Physicians, the American Dietetic Association, and the National Council on Aging.

Older adults are being focused on by the Initiative because, as a whole, they are at a larger risk of malnutrition than any other age groups.

PERSONS wishing to obtain a copy of the "Determine Your Nutritional Health" checklist and eating right guidelines are asked to contact the Wayne Senior Center, 306 Pearl St., Wayne, Neb., 68787, or telephone 375-1460.

Briefly Speaking

Agatha Krallman honored for 80th

WAYNE - Agatha Krallman of Wayne was guest of honor for her 80th birthday on Feb. 23 in the home of her daughter and son-in-law, Gary and Yvonne and Marla Manning of Bennington.

Guests present included her son and family, Gary and Judy Krallman, Kurt and Pam of Bellevue, and granddaughter Michele and Dan Broekemeier of Columbus. Also attending were Julius and Marian and William Baier, Eddie and Verna Mae Baier, Irene Geewe, Donna and Duaine Jacobsen and Esther Echtenkamp, all of Wayne, Sara and Ashlee Young of Lincoln and Lisa Jacobsen of Omaha.

Card prizes were won by Eddie and Verna Mae Baier, Irene Geewe, and Donna and Duaine Jacobsen.

Divorced, widowed, separated confab

AREA - The 1992 March Area Conference for divorced, widowed and separated persons will be held Saturday, March 21 at the Elks Club, located on East Norfolk Ave., in Norfolk.

Registration for the conference begins at 8:30 a.m., and cost for the entire day is \$20.

Speakers include Dr. John Curran, counselor and psychologist, on the topic "Self-Acceptance to Self-Esteem"; Barry Gridley, chaplain at Valley Hope, on the topic "Co-Dependency — Counterfeit Love"; and Connie Barnes, counselor at Monroe Mental Health, on the topic "A Pep Talk for 1992."

There will be a noon lunch and a social time from 4 to 5:30 p.m., followed with dinner from 5:30 to 7 p.m. and dancing from 7 to 11 p.m., with music provided by Midnight Wind.

Persons wishing additional information about the conference are asked to call Wayne, 375-5430, or Norfolk, 371-1832.

Senior Center Congregate Meal Menu

(Week of March 2-6)
Meals served daily at noon
For reservations call 375-1460

Monday: Beef and noodles, peas, cheese and crackers, Waldorf salad, muffin, tapioca.

Tuesday: Baked country steak, baked potato, wax beans, gelatin cubes, white bread, pears.

Wednesday: Veal birds, broccoli, pineapple slices, whole wheat bread, brownie.

Thursday: Roast beef with gravy, whipped potatoes, beets, pickle, whole wheat bread, apricots.

Friday: Tuna and noodles, mixed vegetables, juice, cottage cheese salad, raisin bread, pie.

Coffee and milk served with meals

Engagements



Skokan-Hunke

Making plans for an April 25 wedding at St. Mary's Catholic Church in Wayne are Sonja Ann Skokan and Rodney James Hunke.

Miss Skokan graduated from Wayne State College in 1990 and is currently a senior assistant manager at County Seat the Jeanstore in Omaha. Her fiancé also graduated from Wayne State College in 1990 and is employed in Omaha with JC Penney.

Parents of the couple are Larry and Vicky Skokan of Wayne and Leo Hunke of Snyder.

School Lunches

ALLEN
(Week of March 2-6)

Monday: Spaghetti and meat sauce, carrot sticks, breadsticks, pears.

Tuesday: Wieners, tri taters, corn, plain gelatin, roll and butter.

Wednesday: Cheese pizza, lettuce and dressing, peaches, cookies.

Thursday: Chili and crackers, cinnamon rolls, applesauce.

Friday: Fish and tartar sauce, mashed potatoes and gravy, green beans, vanilla pudding, roll and butter.

WAKEFIELD
(Week of March 2-6)

Monday: Ham pattie on bun, tater tots, green beans, pears.

Tuesday: Chili and crackers, cinnamon roll, relishes, pineapple.

Wednesday: Grilled cheese, corn, applesauce, peanut butter cookie.

Thursday: Tavern, macaroni salad, pineapple, peas, Rice Krispie bar.

Friday: Surfburger with tartar sauce, mashed potatoes, roll and butter, tossed salad, peaches.

WAYNE-CARROLL
(Week of March 2-6)

Monday: Chicken pattie with bun, lettuce and mayonnaise, buttered peas, pears, cookie.

Tuesday: Chili, crackers, apricots, cinnamon roll.

Wednesday: Fish with bun, tartar sauce, whipped potatoes, celery stick, apple crisp with whipped topping.

Thursday: Beef pattie with bun, pickle slices, macaroni and tomatoes, fruit cocktail, bars.

Friday: Ham and cheese with bun, pickle spear, green beans, peaches, cookie.

Milk served with each meal

WINSIDE
(Week of March 2-6)

Monday: Taco beef salad with cheese, cheesecake, fruit, dinner rolls and butter.

Tuesday: Nachos and cheese, chili soup and crackers, fruit cocktail, cake.

Wednesday: Ham pattie on bun or fish sandwich, lettuce and mayonnaise, cottage fries, carrot sticks.

Thursday: Chicken nuggets, mashed potatoes and gravy, green beans, dinner rolls and butter.

Friday: Hot dog on bun or surfburger on bun, oven fries, salad, cookies.

Record

Continued from page 1

the year, there were 12 burglaries reported. In comparison to 1990 statistics, there was one reported burglary, resulting in the loss of \$1,775. For 1991, reported losses totalled \$4,400, of which \$2,860 was recovered.

Vandalism resulted in 85 reported incidents. In all, 48 incidents of vandalism were reported to vehicles and 17 incidents were reported to buildings. The reported losses from vandalism totalled \$12,318.

But 1992 appears to be a year of change for the Wayne Police Department, with the retirement of two officers. Sgt. Ron Penlerick retires April 1 and Sgt. Melvin "Lefty" Lamb retires July 1. Their combined experience totals 50 years.

"We will eventually regain the loss of 50 years of experience,"

Fairchild said. "But anytime you lose that, you lose a lot of experience and a lot of connections those officers have made in the community. It will take time, but we will get that back."

ON CONCERN starting to weigh with the WPD is over drug trafficking and the threat of youth gang activity. While there have been a few signs of drug activity, the gang activity hasn't shown up yet.

Fairchild says he has no idea whether there will be any gang activity in the area but he said since it's starting to be reported in Norfolk and Sioux City, it's logical that it may eventually show up in Wayne. He noted, however, that he expects continued arrests in the war on drugs.

"Both of those elements are out there and sooner or later we'll encounter them," he said. "They are both growing trends."

JDC

Continued from page 1

der the current governance structure, the sheriff has control of policy, procedures and budget line items. The Wayne County Commissioners control some of the money and site support, but they don't act as a governing board. The 20 counties and two reservations serve strictly as advisory boards with no authority.

"Whatever we come up with has to be something that Wayne County can live with," Lynn said.

At one point of the meeting, one official from Knox County asked what the real problem is.

"No one seems to come out with it, we just keep going around," the Knox County official, who could not be identified, said.

WITH THAT, Tim Austin, a former member of the Nebraska Crime Commission, said he believes the Wayne County board would feel "much better if they were leasing a facility, so they would not be as liable. They don't

want to share the sheriff with the facility."

Wayne County Commissioner Chairman Gerald Pospishil said Austin was correct.

"There is no reason why one person should have control over it. These counties should have some limited authority. I don't think there was enough planning to begin with."

Lynn was also critical of the way counties had been paying for the facility's operation. He said prisoner cost per day for 1991 was estimated at \$51.92 per day. He said with that figure, Wayne County has been paying more than its fair share for the JDC's operation. But Janssen disagreed.

The next stage of the study will be for Lynn to visit with representatives from each of the 22 governing bodies. After that, he is expected to make a recommendation at the next meeting, set for March 27 at the Villa Inn in Norfolk. The meeting will be held at 1:30 p.m.



Photography: Mark Crist

Finish to story hour

WAYNE LIBRARIAN JOLENE KLEIN READS a story to a group of youngsters who attended the Winter Story Hour. The last winter story hour was held last Saturday at the Wayne Public Library. The youngsters really seemed to get into this story, because all eyes were on the book Klein was holding.

Area communities get NPPD refunds

Four communities in The Wayne Herald coverage area will be among 201 Nebraska communities to receive a share of \$7 million as a result of agreements leasing their electric distribution systems to Nebraska Public Power District.

According to information from the NPPD office in Columbus, Hoskins will get \$8,981; Allen will

receive \$11,258; Concord will get \$4,528; and Dixon will receive \$3,554.

THE MONEY represents one-half of the annual payments made by NPPD under terms of the lease agreements. The payments are for the last half of 1991. The money

can be used by communities any way they desire.

NPPD pays communities 12 percent of the adjusted gross revenues realized within the corporate limits. The money being turned over to communities does not include the annual 5 percent in-lieu-of-tax payments required by state law.

Banks

Continued from page 1

loans, each bank reported. State National and Farmers and Merchants said their greatest volume loans, notes which carry the greatest balances, are real estate and agricultural loans. First National Bank said their highest volume loans were with vehicle purchases.

All three banks reported that there are more loans accepted than are denied. And each president said that's good because it means there's more money being pumped into the local economy.

"Our economy locally is in pretty good shape," Jordan said. "I believe the banks have been a contributing factor in that."

An update on issues in emergency medical services will be held at the Community Center in Pender on Saturday, March 7, from 9 a.m. to 4 p.m.

Respiratory problems, such as emphysema, bronchitis, asthma and farmer's lung, and their treatment by pre-hospital providers will be discussed by Dr. Susanna Von

Essen from the University of Nebraska Medical Center.

Registered nurse Joyce Hinze will cover trauma and medical problems of the elderly.

Eddy Williams, emergency medical services coordinator from the Nebraska Department of

Health, will do an update on training issues and current legislation affecting EMTs.

There is a \$5 preregistration fee to cover lunch. For more information contact Eddy Williams at the Health Department, 1-800-422-3460.



Connie Keck

Director gets funds for training

Connie Keck, director for the Bureau of Community and Economic Development at Wayne State College, has been awarded a scholarship to participate in "Helping Small Towns Survive: A Training Program for Community Developers," April 30 through May 4 in Jackson Hole, Wyo.

The training program is coordinated by the Heartland Center for Leadership Development and funded by a grant from the W.K. Kellogg Foundation.

Keck is one of 15 workshop participants from Nebraska.

Arts and music of Lakota featured at Wayne State

Ken Bales, fine arts professor at the University of Nebraska-Omaha, will present a program on the historical and contemporary art and music of the Lakota (Western Sioux) on Thursday, March 5, 3:30 p.m., in the Humanities Building, room 319, at Wayne State

College. The public is invited. The program combines slides, audio, lecture and discussion. This program will present a discussion and analysis of traditional art and music of the Lakota people, and is being sponsored by the Wayne State College History Club.

Obituaries

Lela Reed

Lela Reed, 91, of Tacoma, Wash., died Monday, Feb. 24, 1992 at the Lakewood Care Center in Lakewood, Wash. Graveside services were held Friday, Feb. 28 at the Laurel Cemetery. The Rev. Ron Mursick officiated. Schumacher-McBride-Wiltse Funeral Home was in charge of arrangements.

Lela Grace Reed, the daughter of Thomas and Kaye Hayes Iler, was born Jan. 4, 1901 at Laurel. She attended rural school north of Laurel. She married Earl Reed on Dec. 9, 1918 at Hartington. The couple farmed for three years, then moved into Laurel, until Earl died in 1954. She moved to Oakland, Calif. from 1955 until 1971 when she moved to Tacoma, Wash.

Survivors include one son, George Thomas Reed of ElCerrito, Calif.; one daughter, Mrs. Kurt (Delores) Kirkham of Tacoma, Wash.; one sister, Opal Jacobson of Sioux Falls, S.D.; four grandchildren; and three great grandchildren.

She was preceded in death by her parents, husband and two brothers.

THE WAYNE HERALD AND MARKETER

114 Main Street - Wayne, NE 68787 375-2600
PUBLICATION NUMBER USPS 670-560



PRIZE WINNING NEWSPAPER
1991 Nebraska Press Ass.

National Newspaper Association
Sustaining Member 1991

Serving Northeast Nebraska's Greatest Farming Area

Established in 1875; a newspaper published semi-weekly, Monday and Thursday (except holidays). Entered in the post office and 2nd class postage paid at Wayne, Nebraska 68787. Also publisher of The Marketer, a total market coverage publication.

POSTMASTER: Send address change to The Wayne Herald, P.O. Box 70, Wayne, Nebraska, 68787

Official Newspaper of the City of Wayne, County of Wayne and State of Nebraska

SUBSCRIPTION RATES

In Wayne, Pierce, Cedar, Dixon, Thurston, Cuming, Stanton and Madison Counties: \$25.00 per year \$20.00 for six months. In-state: \$28.00 per year, \$22.50 for six months. Out-state: \$34.00 per year, \$27.50 for six months. Single copies 45 cents.

Editor / Publisher - Lester J. Mann
Mng. Editor - Mark Crist
Asst. Editor - LaVon Anderson
Sports Editor - Kevin Peterson
Ad Manager - Jan Bartholomew
Receptionist - Karen Witt
Bookkeeper - Linda Granfield
Typesetters
Alyce Henschke & Shelley Kirk
Composition Foreman - Judi Topp
Press Foreman - Al Pippitt
Darkroom Technician - Jeff Sperry
Columnist - Pat Meierhenry
Commercial Printers
Charles Kudlacz - Teri Robins
Mailroom Manager - Doris Clausen
Mailroom Asst. - Todd Sokol & Mary Hill
Press Room Asst. - Joel Tyndall
Maintenance - Roni Jackson & Jackie Hoese
Special Project Asst. - Lois Green,
Glenda Schluns & Joni Holdorf

Include us in the Wedding of the Year

JAMMER PHOTOGRAPHY



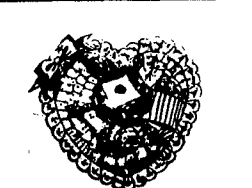
WEDDING PHOTOGRAPHY
217 MAIN • WAYNE, NE.
402-375-2363

Madonna's Wedding Belle

- *HIGH QUALITY GUARANTEED
- *CUSTOM-MADE GOWNS
- *LUX FLOWER ARRANGEMENTS
- *INVITATIONS
- *VEILS
- *DYABLE SHOES & FABRICS
- *ACCESSORIES
- *PROM ATTIRE



Open 9:30 - 5:00 Mon - Sat
Thursday til 8:00
Madonna Platt, Owner
402-371-3409
439 Norfolk Ave. Norfolk, NE



Check our Deli for your wedding reception needs! Ask about Meat and Cheese, Vegetable, or Fruit Trays. Our Deli Department will also decorate cakes to specifications.

WAYNE'S PAC'N'SAVE DISCOUNT SUPERMARKETS
West Hwy 35
Wayne, Nebraska
Telephone: 375-1202

Wedding Registry

Custom Imprinted Wedding and Shower

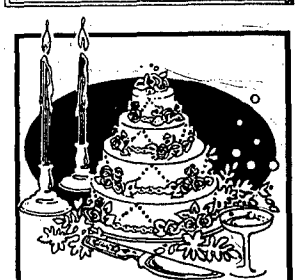
Napkins

Attendant's Gifts

Hallmark

Wedding Albums

Sav. Mor Pharmacy 1022 Main 375-1444



Blackburn's Catering & Bakery

Our Catering Service, complete with all the finishing touches, can design those special trays for you...
*Finger Sandwiches, Meats, Cheeses, Relish, Fruits, *Punch, *Mints
*Nuts *Complete Dinner Reception, Waiters Available
*Beautifully Decorated Wedding Cakes

"We give it that personal touch"
429 Norfolk Ave.
371-6120
Sunset Plaza
371-3094
Norfolk, Nebraska
Stop in or call...

10% OFF ON TUXEDO ORDERS PLACED THROUGH MARCH 31, 1992



SURBERS SURBERS
202 MAIN STREET WAYNE

PANCAKE SUPPER
to benefit
Wayne Area Kinship
SUNDAY, MARCH 1
4:00 - 7:00 PM
MASONIC Lodge
911 Lincoln Wayne, NE
Adults: \$3.00
Children: \$1.50
Tickets available at the door.
MATCHING FUNDS APPLIED
FOR WITH LUTHERAN
BROTHERHOOD BRANCH
8212 CHALLENGE FUND.

Wakefield downs Wisner-Pilger

Wakefield advanced to the district championship game to be played Monday night at Wayne High at 8 p.m. against Hartington Cedar Catholic for the third consecutive year, after the Trojans captured their fifth consecutive sub-district championship, Thursday night against Wisner-Pilger, 50-44 in Rice Auditorium.

The district championship series between Wakefield and Cedar is tied at one apiece with Wakefield winning in 1990 while Cedar won in overtime in 1991.

At stake, is a state tournament berth and perhaps the inside track to the finals. Cedar will bring a 19-3 record into the contest and the number five ranking in Class C-1 after they defeated third rated Randolph by four points in its respective sub-district.

Wakefield will enter Wayne High's gym with its third consecutive 20-win season in tact as they improved to 20-5 with its six point win over Wisner-Pilger.

The Trojans didn't look overly impressive in Thursday's win but Brad Hoskin's crew relied on defense to get the job done once again. The Trojans trailed Ray Wahl's Gators by a 13-11 margin after the first period but Wakefield went on a 13-6 scoring run in the

second quarter to lead 24-19 at the break.

The Trojans increased their lead to six after three quarters at 36-30 and both teams managed 14, fourth quarter points. "Wisner had a good month of basketball," Hoskins said. "They play hard every game for four quarters and when you do that you are usually in every game you play to the end."

Wisner tied the game at 38 midway through the fourth quarter but Wakefield didn't allow the Gators to take the lead. "It came down to defense and foul shots in the fourth quarter," Hoskins said. "We hit 10 of 13 free throws in the last quarter and we scored our final nine points of the game from the charity stripe."

Anthony Brown and Dalton Rhodes led the Trojans with 11 points apiece while Marcus Tappe and Steve Clark netted 10 each. Ben Dutton and Jon Johnson rounded out the scoring with four points each.

Wakefield edged the Gators in rebounding, 26-25 as Dutton led the way with 10 caroms while Clark hauled down seven. Wakefield had 19 turnovers but forced Wisner-Pilger into 22 and the Trojans were 17-23 from the foul line while Wisner was 8-18.



Photography: Kevin Peterson

WAKEFIELD'S ANTHONY BROWN looks for an open teammate during sub-district finals against Wisner-Pilger on Thursday night in Rice Auditorium. Wakefield won by six and will face Cedar Catholic Monday night in Wayne.

Winside boys falter in rematch with Newcastle

The Winside boys basketball team had its season ended Thursday night in Laurel, by Newcastle, 64-36 in the championship game of the D1-7 sub-district.

The Wildcats had defeated the Red Raiders by two points, six days earlier in the regular season finale in Winside but Newcastle came out gunning in this dual as they scored the first 11 points of the game.

Winside managed to out-score Newcastle, 8-3 the rest of the first period to trail by six at 14-8. Newcastle held a 31-24 halftime advantage but Winside cut that gap to four points early in the third quarter before the roof caved in on the Wildcats.

"I really can't tell you what happened," Winside coach Shannon Pospisil said. "We were down by four and then two or three minutes later we were down by 16. We had about four straight turnovers which led to eight points on lay-ups."

Winside was out-scored 33-12 in the second half. "Our shots just quit falling in the second half," Pospisil said. Only three Wildcat players put their names in the scoring column led by Cory Miller with 17 points.

John Hancock tallied 14 and Cory Jensen scored five in his final game as a Winside basketball player. Newcastle out-rebounded Winside by a 37-32 margin. Miller hauled down 14 boards to lead his squad while Cam Shelton notched eight caroms.

Newcastle was led in scoring by Gary Kneiff with 20 points including seven of the first nine of the game. Allan McGill followed with 18.

The Wildcats suffered 17 turnovers while Newcastle had only six. Winside was 5-10 from the free throw line and Newcastle was 13-21. Winside closes out its season with a 5-13 record while Newcastle goes on to face Verdigré for a state tournament berth.



Photography: Kevin Peterson

WINSIDE'S CORY JENSEN ATTEMPTS a shot during his final high school basketball game Thursday in Laurel.

Softball team to rely on team speed

By Corey Jacobs
Wayne Herald intern

To third year coach Dan Pollard the 1992 Wayne State College softball season will be a "speedy" one. Maybe not the length of the season, but the team is definitely loaded with speed.

"Team speed is our greatest offensive strength," Pollard said. "We have five girls who are three seconds or less from first to second base. At this level that is very fast."

Leading the way for the 'Cats, who ranked seventh in the nation in stolen bases last year, will be juniors Dee Henningsen and Marti Hunt. Henningsen returns as the leading active base stealer in NCAA Division II. She has 81 career thefts and needs just 35 steals to become the all-time national leader. Last year Henningsen stole 37 bases after swiping 44 as a freshman. Hunt added 33 steals last year and enters the season with 59 career thefts.

"Offensively we put a lot of pressure on people with our speed. Teams tend to pitch around our hitters; then we just beat them with speed," Pollard said.

After a good recruiting year Pollard feels the defense will benefit most from the added depth of his freshmen. "Recruiting went very well. It added needed depth and a number of freshmen will be contributing immediately," Pollard said.

Nine returning letter winners anchor the way for this year's squad which is looking to improve on a 15-21 record a year ago.

On defense the 'Cats bring a wealth of experience to the outfield. Senior Carla Gilberton moves from third base to right field and juniors Jill Gengler and Hunt fill left and center field respectively. Gengler and Hunt earned All-district honors last year and Gilberton was an honorable mention selection.

Newcomers Chawndell Mier, Tara Colwell and Renee Miller add the needed depth to the outfield.

Michele Reinhardt, an All-district selection last year as a freshman, anchors the infield from the catcher position with freshman Sarah Lee serving as back-up.

Playing the corners in the Wildcat infield will be Jeni Umbach at first base and freshman Jenna Flesner at third base. Covering the middle of the infield will be Jenny Reuland and Henningsen at second and shortstop respectively.

Henningsen was a second team All-district selection and Reuland earned honorable mention last year.

Pitching could prove to be another strength for the Wildcats this season. Sophomore hurlers Alex Ross and Jenny Nieland bring experience to the young staff. Ross was an All-district honorable mention selection last year and will also see infield and designated hitting duties this year. Nieland returns after posting a team low 2.10 earned run average in '91.

Freshmen Amy Copley, Michelle Harris, Kelly Sheaff and the addition of first year assistant coach Heather Hansen look to have an immediate impact on the season.

Hansen comes to Wayne State College from the University of West Florida where she was an NAIA All-American pitcher.

"Pitching is everything in softball, and I believe our pitching staff will benefit a great deal from Heather's experience," Pollard said.

"We expect to be better than last year," Pollard said. "Our short term goal for right now is to improve our record from last year."

That improvement will have to come against what Pollard calls a "very challenging schedule." The Wildcats are scheduled to play against nine teams that qualified for the national tournament in 1991.

With the season opener approaching at the West Florida Classic, March 5-11, Pollard likes the team is playing at.

"Preseason went very well. Mentally we are ahead of where we were at the end of last season. Now it is just a matter of catching up physically in competitive play," Pollard said. "This team tends to communicate better than any team I've coached. That continuity puts us in position to perform on the field. Right now they're all on the same page."

The Wildcats, 49-43 under Pollard, open at home March 16 against Dordt College.

Wayne City Rec

The Wayne City Rec Men's Basketball League continued last week with action taking place on Monday, Tuesday and Wednesday. In "A" League games it was team Six defeating team Five, 87-72.

Adam Msrny caught fire for the winners as he poured in 45 points while Leif Olson added 14 and Randy Korger, 12. Jon Wolfgang led team Five with 26 points while Doug Manz poured in 18. Matt Jonas scored 11 and Doug Lute finished with 10.

In the second game it was team One defeating team Two, 59-56 as Dustin Pecena led the way with 16 points. Kelly Stallbaum scored 14 and Randy Gamble netted 12 while Paul Dean scored 11. Willy Gross led team Two with 25 points while Todd Oborny scored 12; Dan Cross was also in double figures with 11.

In the final game last Monday it was team Seven downing team Four, 78-57. Scott Hammer led the winners with 29 points while Chad Metzler netted 23. Steve Sorensen finished with 16. Larry Ballinger led team Four with 29 points while Monte Tilgner netted 14. Chris Looft finished with 10.

Turning to "B" League action last Tuesday it was team Five edging team Seven, 70-69. Joel Ankeny led the winners with 21 points while David Braun tallied 19. Mike Dunklau netted 12. Brad Jones led team Seven with 20 points while Jerry Echtenkamp scored 15. Jeff Dion and Klassen netted 12 each and Dean Milander scored 10.

In the second contest it was team One defeating team Four, 64-59. Jeff Brandt led the way with 21 points while Mike Sharer and Dan Ingwersen netted 18 apiece. Doug Carroll led team Four with 32 points while Larry Wetterberg added 10 and Jere Morris, nine.

The final game of the night saw team Three defeat team Two, 73-67. Breck Giese led the winning team with 19 points while Jerry Nicholson added 18. Nick Hochstein and Jim Lindau were also in double figures with 16 and 14 points respectively. Mike Meyer led team Two with 29 points while Jeff Zeiss poured in 23. Terry Luhr tallied 11.

In "C" League action last Wednesday it was team Four narrowly getting past team Two, 43-42. Bob Nelson led the winners with 18 points while Bob Dyer scored eight. Bill Woehler added eight and Bob Kinney scored six. Dale Jackson led team Two with 17 points while Bill Blecke and Gene Casey scored eight apiece. Dave Olson finished with six.

In the last game it was team One downing team Three, 39-33. Jack Imdieke led the winners with 12 points while Craig Tiedtke scored seven. Ted Baack, Dave Loberg and Don Sherman each scored six. Marian Arneson led team Three with nine points while Denny Bowers scored eight. Jon Rethwisch finished with six points.

Wayne State gals notch major win over Morningside

Mike Barry's Wayne State women's basketball team added another major victory to their repertoire Wednesday night in Rice Auditorium as they defeated North Central Conference foe Morningside, 74-72.

The victory left WSC with a 17-9 record and the Wildcats etched their names in the record books with the fourth winningest season ever. Morningside left with a 12-12 record.

The contest was close throughout with the biggest lead for the Wildcats coming at the 9:09 mark in the first half when they led 27-19. Morningside's biggest lead of the contest was six points at the 12:36 mark of the second half when they led 53-47.

WSC held a 41-38 lead at the intermission and the Wildcats scored the first points of the second half on a short jumper by Jodi Otjen before Morningside went on a 15-4 scoring run to take that six point lead.

Mary Schnitzler gave the host team the lead back, on a 3-pointer at the 9:44 mark at 56-55 and from that point on the Wildcats never trailed even though their biggest lead from that point on was five points.

Linda Heller came off the bench

to lead WSC in scoring with 13 points while Lisa Chamberlin and Jodi Otjen scored 12 apiece. Schnitzler was also in double figures with 11 points while Cheri VanAuer and Dana Olmsted scored eight each.

Lynn Nohr finished with six points on two, 3-pointers and the WSC scoring was rounded out by Brenda TeGrotenhuis and Cyndi Savage with two points each.

Morningside was led by Sarah Roloff with 15 points while Melinda Howard and Shawna Paskert were also in double figures with 12 and 11 points respectively.

Morningside hit just over 50 percent of its shots from the field on a 30-59 performance while the Wildcats were 29-74 for 39 percent. The visitors were 12-23 from the free throw line while WSC was 13-16.

The Wildcats were out-rebounded, 47-38. VanAuer, Olmsted and Schnitzler led the winners with six caroms each while Chamberlin and Heller hauled down five apiece.

WSC had 18 turnovers in the game but forced Morningside into 28. Chamberlin had three blocked shots for the Wildcats and she shared team honors with Heller in steals with four each.



WAYNE STATE'S LISA CHAMBERLIN shoots over a Morningside defender during the Wildcats two point win Wednesday night in Rice Auditorium.

WSC sluggers see a winning season

Spirited preseason practices have ninth-year Wayne State College baseball coach Lenny Klaver thinking playoffs.

"Another winning season and being in position for a playoff berth are goals that we have set," Klaver said. "But I feel we must maintain our intensity and work habits. Furthermore, we must not lose focus on our goals."

"We are pretty fundamentally sound, and return a lot of experience in the field," Klaver said. "Our pitching staff is young, but if they develop the way I know they can, we'll be a very strong team."

If the Wildcats opening game of the season outcome is any indication of what is to come, then Wildcat fans are in for a treat. WSC upset previously 11th rated Creighton of NCAA Division I in Omaha, 5-4.

Seniors Rick Roberts, (1B), Shane Kober, (SS), and Jeff Bjerke (3B), will provide the leadership in the infield. Bjerke and Kober will also be counted on to bolster the pitching staff.

Junior second baseman Troy Test set a WSC record will 11 sacrifice bunts last season, while Cory Reeder hit .326 after trading his shoulder pads for catcher's equipment. Juniors Mike Stauffer and Travis Nedved are experienced reserves.

Freshman Rusty Hamer of Wayne, (3B), Joe Hutzal, (2B), Jeff Mullins, (2B), Tim Kurtz, (1B), Mark Kackley, (C) and sophomore Rob

Radford, (C), provide infield depth.

Senior Chris Jones patrols center field for the 'Cats. Junior Dave Shields and sophomore Jeff Schneider are expected to start in left and right field, respectively. Schneider will also be one of WSC's left-handed starting pitchers.

Brent Cameron, Jeff Burger, and Kyle Stephenson will also battle for playing time in the outfield.

Junior Jeff Gohr and sophomore Jeff Lutt headline the returning starting pitchers. Juniors Larry Ballinger and Troy Parrott will also see plenty of mound action.

Junior Bill Guenther returns as the 'Cat closer with help from Kober. John Janssen, Todd Koozer and Chris Looft bolster WSC's pitching staff.

The Wildcat schedule features NCAA Division I powers Creighton, Nebraska and Iowa State, in addition to some top Division II California schools during the team's March swing through San Diego.

Klaver will continue his reign as the Wildcats most successful baseball coach ever. His 201-179 career mark includes seven consecutive 24-plus win seasons. He earned "District Coach of the Year" honors after guiding his 1987 squad to the District 11 title.

Klaver will be assisted by John Manganaro for the third straight season. He will work with outfielders and hitting at WSC. Ken Missett will enter his second season as an assistant.

Youth Community Calendar

MONDAY, MARCH 2
 1,2,3 grade Brownies, Methodist Church, 6:30 p.m.
 Junior Girl Scouts, Redeemer Church, 7 p.m.
 Boy Scouts, St. Paul's Church, 7 p.m.
 Spring sports practice begins

TUESDAY, MARCH 3
 Daisies, Methodist Church, 7-8 p.m.

WEDNESDAY, MARCH 4
 Awana Club, K-6th grade, National Guard Armory, 6:45 p.m.

THURSDAY, MARCH 5
 4th grade Webelos, 1015 Poplar Street, 7 p.m.

THURSDAY-SATURDAY, MARCH 5-7
 NSBA Band Clinic, Lincoln
 Girls State Basketball

FRIDAY-SUNDAY, MARCH 6-8
 Community Theater, "The Dining Room"

SUNDAY, MARCH 8
 Methodist Senior UMYF, speaker on Holocaust, 7 p.m.

For any corrections or additions to this listing, please contact Imogene at 375-4998 (home) or 375-3455 (work) and leave a message. Deadline is Thursday noon. Each calendar will include a schedule of events for the next week.

Blinking lights indicate signs of electrical woes

If lights blink when electrical equipment is started, it's probably a clear signal that something is wrong in the electrical system, a University of Nebraska-Lincoln agricultural engineering specialist said.

Gerald Bodman said the problem most likely is an overload, either from placing too much demand on the system or because of an impending equipment failure.

He noted that household and farm wiring systems are sized for some maximum load. As time goes on, that limit can be exceeded.

"In most cases you very seldom delete equipment," he explained. "You add more and more. We

have the attitude that as long as everything runs when we turn on the switch, everything is OK. But blinking lights are not a part of a properly operating electrical system."

Since overloads often build up gradually, they can be temporarily overcome by installing larger and larger fuses as the old ones blow, he said. But that is dangerous because eventually the undersized wiring can overheat, setting fire to the insulation and then the building.

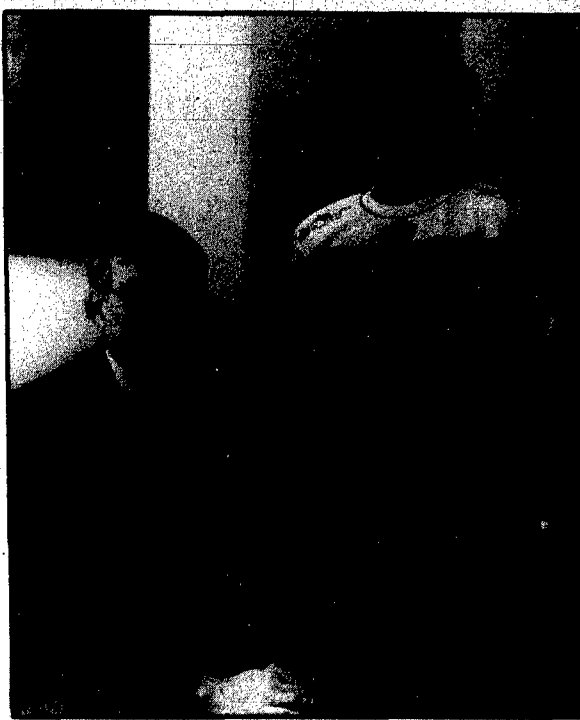
On the other hand, properly sized fuses sometimes suddenly blow even though the total load hasn't increased, Bodman said. This can be a sign of an equipment failure about to happen, such as when a bearing is burning out, thus increasing the power needed to turn the equipment.

If blinking lights do occur when a particular piece of equipment is started, the problem can be narrowed down in some cases by plugging it into a different circuit, Bodman said. If no blinking occurs, the problem likely is in the original circuit. But if the blinking continues, the problem may be either in the equipment or the main supply circuit, he explained.

The problem may even lie in the transformer on the supply line, he said. Like household circuits, these too are sized for certain loads that can be exceeded over time.

The possibility of transformer problems shows the need for expert help in solving many electrical problems, Bodman said. The power company or a professional electrician should be called in if problems remain elusive.

"People shouldn't be afraid to ask for help when dealing with electricity," he concluded. "I would call the power company first to check the transformer and then call in an electrician if needed."



Photography: Mark Ort
IN A CONCERT THURSDAY, CONNIE WEBBER will be accompanied by James Day on the piano.

Soprano plans concert at Wayne State on March 5

Connie Webber, soprano and assistant professor of music at Wayne State College, will present a solo vocal recital Thursday, March 5, at 8 p.m., in the Brandenburg Education Building's Ley Theatre. The public is invited.

Webber, who is also director of music at Wayne's First United Methodist Church, will be accompanied by James Day on piano. Day is professor of music at Wayne State.

Webber and Day will perform

vocal literature of Handel and Purcell as well as two groups of Schubert German Lieder. The program will include the famous aria "Vissi d'arte" from Puccini's opera "Tosca," and will close with a group of Russian songs by Rachmanoff, sung in English.

Webber, a faculty member at Wayne State since 1966, earned her bachelor of music degree from Oberlin College, and her master of arts degree from Kent State University.



A NUMBER OF WAYNE CUB SCOUTS were moved up into the Webelos program last weekend during the Blue and Gold banquet.



JUST AS A NUMBER OF CUB SCOUTS moved to different levels of the program, a number of Webelos joined the Boy Scouts program last weekend, as well.

Blue and Gold affair marks change Cubs hold annual banquet

Pack 174 of Wayne held its Blue and Gold banquet on Feb. 22 with Magician Dale Mundil providing the entertainment.

Receiving their bear badge were Sam Kinnett, Roy Ley, David Murray, Ryan Teach, Chris Woehler

and Eric Shapiro.

Brandon Garvin, Nick Simmons, Ryan Haase, Dan Fletcher, Craig Hefti, Mark Morrison, Mike Morrison and Jon Gathje received their Webelos badge.

Receiving the Arrow of Light badge were Brian Hochstein, Tim Zach, Josh Murtaugh, Cody Niemann, Matt Sobanski, Brian Finn, Matt Woehler, David Lindner, Jeremy Braadland, Scott Reinhardt and Bryan Preston.

Soybean board announces openings for district; includes Dixon County

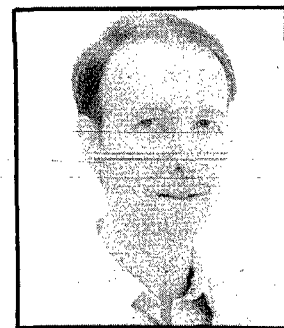
LINCOLN - Notice is hereby given that vacancies on the Nebraska Soybean Development, Utilization and Marketing Board (NSDU&MB) exist in District 2. District 2 includes the counties of: Burt, Cuming, Dakota, Dixon, and Thurston.

The NSDU&MB consists of eight members appointed by the Governor, one at-large member elected by the Board. The term of office is three years, with three board positions up for appointment each year.

Any soybean producer interested in appointment may place his or her name on the candidacy list for the respective district by filing a petition with the Board. Qualified individuals residing within the above counties will be eligible. Qualified candidates are those persons who are citizens of Nebraska, are at least 21 years of age, have been actively engaged in growing soybeans in Nebraska for at least five years, and derive a

substantial portion of their income from growing soybeans.

A candidacy petition must carry the signatures of at least fifty (50) resident growers of the district for which the candidate is applying. All petitions must be received by the Board not later than 5 p.m. Friday, May 15, 1992. Petition forms may be obtained from the Nebraska Soybean Development, Utilization and Marketing Board, P.O. Box 95144, Lincoln, NE 68509. Phone (402) 471-4894.



Dr. Bruce Neubauer

WSC professor presents paper at conference

Dr. Bruce Neubauer, assistant professor of political science at Wayne State College, recently presented a paper on incorporating computer skills into public administration courses at the 15th annual National Conference on Teaching Public Administration.

The conference was held at the College of Charleston in South Carolina.

Dr. Neubauer, who came to Wayne State in 1990, earned his bachelor's degree from the Georgia Institute of Technology, Atlanta, and his master's of business administration from Augusta College in Georgia. He also holds a master's in public administration, and a doctor of public administration degree from the University of Georgia.

BOWLING AT MELODEE LANES

Senior Citizens Bowling
 On Tuesday, Feb. 25, 26 senior citizens bowled at Melodee Lanes with the Arland Aurich team defeating the Don Sherbahn team 5765-5689. High scores and games were bowled by Cliff Baker, 551-194; Duane Creamer, 514-182; Perry Johnson, 493-189; Winton Wallin, 488-198; Milton Matthews, 487-170; Jim Sturm, 483-175; Ed Carroll, 477-170.

On Thursday, Feb. 207, 27 senior citizens bowled at Melodee Lanes with the Norman Anderson team defeating the John Dall team 6222-6182. High scores and games were bowled by Marfound Lessmann, 603-233; Duane Creamer, 553-203; Dick Carman, 533-204; Marvin Dranselka, 530-186; Myron Olson, 527-206; Cliff Baker, 507-193; Melvin Magnuson, 506-186; Harry Mills, 500-201.

City League

Pabst Blue Ribbon	24	3
Wayne Greenhouse	17.5	10.5
Black Knight	16	12
K.P. Construction	16	12
L & B Farms	14	14
Grove Repair	14	14
Wood Plumbing	14	14
Pac-N-Save	12	16
Melodee Lanes	12	16
Wayne Vets Club	11.5	16.5
Rain Tree	11	17
Trio Travel	6	22

High Scores: Val Kienast, 257; Darrell Metzler, 886; K.P. Construction, 953; Pabst Blue Ribbon, 2702.

Kevin Wurdeman, 207; Mark Klein, 222; Ron Brown, 209; Les Keenan, 200; Mark Gansobom, 213; Doug Rosa, 220-225-515; Bryan Park, 223; Darrell Metzler, 255-220-223; Val Kienast, 618; Dan Zukosky, 232; Marv Dranselka, 239.

Wednesday Night Owls

4th Jug 1	23	9
Logan Valley	23	9
Tom's Body Shop	21	11
Electrolux Sales	21	11
Comical St. Bank	18	14
4th Jug II	14	15
Dekalb	16	16
Agri-King	15	17
Flay's Locker	12	20
Melodee Lanes	11	21
The Windmill	9	23
Shelly's Saloon	6	26

High Scores: Randy Bargholz, 248-693; 4th Jug 1, 959-2656. Randy Bargholz, 204-243; Onville Anderson, 212; Charles Maier, 203; Duane Jacobsen, 208; Mic Daehnke, 206; Steve Muir, 200; Steve McLagan, 201; Doug Rosa, 211; Jay Robensdorf, 209; Stan Swiden, 200; Gary Roeder, 6-10 split twice.

Go-Go Ladies

Lucky Strikers	26	14
Rolling Pins	24	16
Pin Splinters	22	18
Bowling Bolles	22	18
Double Shots	20	20
Road Runners	19	21
Pin Hitters	17	23
Golden Gals	10	30

High Scores: Carol Griesech, 215-544; Pin Hitters, 750; Road Runners, 2092.

Jonni Jaeger, 181-482; Kathy Jansan, 200-524; Carol Griesech, 215-544; Donna Frevort, 485-5-10 split; Erna Hoffman, 494.

Monday Night Ladies

Producer's Hybrid	29.5	6.5
Wayne Herald	27	9
Dave's Body Shop	25.5	10.5
Tom's Body Shop	24	12
Midland Equipment	23	13
Carharts	19	17
Swans	17	19
1st National Bank	17	19
First Bankcard Cir.	14	22
Farm, March, St. Bank	12	24
Ray's Locker	8	28

High Scores: Deb Erdmann, 203-562; Producer's Hybrid, 874; Dave's Body Shop, 2505.

Jonni Holdorf, 192-497; Deb Erdmann, 181; Cindy Echtenkamp, 182; Jane Ahmann, 182; Bev Sturm, 181-507; Cleo Ellis, 518; Kathy Hochstein, 182-501; Linda Garble, 182-513; Sandra Gathje, 183-511; Rita Paulsen, 191; Deb Erdmann, 4-10 split; Frances Leonard, 2-7 & 4-5 split; Arlene Bennett, 4-7 & 9 split; Lynn Thies, 5-8 split; Pam Mathews, 2-5-7 split; Patti Grashorn, 2-7 split.

Hit's 'N' Misses

Wilson Seed	22	10
Pat's Beauty Salon	21	11
Wayne Campus Shop	21	11
KTCH	20	12
T.W.J. Foods	16	16
Fredrickson Oil	16	16
Pabst Blue Ribbon	15	17
Melodee Lanes	14.5	17.5
The Windmill	14	18
Grove Repair	13	19
Nichols Seed-Feed	10.5	21.5
Greenview Farms	9	23

High Scores: Judy Sorensen, 225; Darci Framm, 540; Melodee Lanes, 942; Wayne Campus Shop, 2690.

Sandy Park, 503; Cec Vandorenick, 192-509; Sandra Gathje, 206-517; Linda Garble, 503; Nina Reed, 187; Cheryl Henschke, 180-507; Jackie Nicholson, 181-602; Nancy Jochum, 187; Judy Paynter, 181-493; Ardie Sommerfeld, 491; Vicky Skolan, 190-505; Cynthia Miller, 182; June Baler, 210-186-534; Judy Sorensen, 533; Kristy Ote, 198; Wilma Fork, 180; Judy Miller, 201; Peg Paulsen, 188; 182-533; Christie Shupper, 199-495; Lynne Thompson, 182; Rita McLean, 191-530; Linda Downs, 190-483; Amy Poggensoe, 187; Eileen Kathol, 207-495; Darci Framm, 190; Judy Sorensen, 6-7 split; Cec Vandorenick, 4-10 split; Judy Paynter, 5-7 split; Ardie Sommerfeld, 2-7 split; Carol Brummond, 5-6-10 split; Terri Jeffrey, 3-10 split; Ann Shater, 5-7 split.

Thursday Night Couples

Stipp-Twite	20	12
Carm. Ostr. Schroe.	18	14
Strum-Heithold	16	16
Austin-Brown	15	17
Johns-Maier-Trio	14	18
Fuelberth-Wessel	13	19

High Scores: Chuck Maier, 211; Janet Heithold, 189-515; Sturm-Heithold, 665; Carmen Ostrander-Schroeber, 9903. Wilbur Heithold, 205; Arlene Ostendorf, 191-505; Verdina Johns, 4-5-7 split; Jim Sturm, 6-7 split; Janet Heithold, 4-6-10.

Junior League

Pin Blasters	17	3
Red Dogs	15	45
Wipe Outs	8	12
Flyan's Repair	7	13
Ghosts	2	18

High Scores: Steve Echtenkamp, 151; Jon Gathje, 383; Stacy Varley, 177-452; Red Dogs, 511-1467. Stacy Varley, 138; Jon Gathje, 143; Nicole McLagan, 136-349; Steve Echtenkamp, 103-352; Trevor Schroeder, 102; Todd Griesech, 132-310.

Saturday Night Couples

Hoffman-Deck	19.5	8.5
Gullit-Gullit	19	9
Jaeger-Krae-Gunn	17	11
Owens-Vito-Schiz	16	12
Peters-Gustafson	14	14
Park-Hogmyr-Mattha	14	14
Beack-VandVid-Wiel	14	14
Erwin-Benson	13	15
Armen-Kath-Endocot	13	15
Schmale-Maritz	12	16
Bacarm-Frevort-Hix	10.5	17.5
Schulz-Wacker-Altm	6	22

High Scores: Bob Gustafson, 288-528; Sandy Park, 189-536; Peters-Gustafson, 657; Jaeger-Krae-Gunn, 1883. Kelly Baack, 188; Easil Kathol, 485; Tami Hoffman, 514; Lynne Allemann, 183-508; Nancy Gullit, 182; Sandy Park, 180.

State National Bank & Trust Co.
 116 WEST 1ST.
 WAYNE
 375-1130

Make us your prescription headquarters!

MEDICAP PHARMACY
 202 Pearl St.
 Wayne, NE.

YOUR SPORTS STATION FOR ALL SEASONS

Thinking about refinancing your present home loan? Would you like to remodel, repair or improve your home? Would you like to purchase a home?

Because of low interest rates, there is NO better time than right now to take care of your housing needs?

We offer a variety of home mortgage and home improvement loans with the flexibility to match your financial needs.

So give us a call or visit the bank where you're somebody special and let us help you with your home financing!

farmers & merchants state bank of Wayne

321 MAIN STREET - P.O. BOX 249
 WAYNE, NEBRASKA 68787
 402-375-2043

MEMBER FDIC



Senior artist

WAYNE STATE COLLEGE STUDENT Matt McKay has his Senior Art Exhibit on display through March 6 in the college's fine arts building. Nordstrand Visual Arts Gallery hours are 9-5, Monday through Friday. The exhibit is mixed-media.

Wayne County Court

County Treasurer
Vehicle registrations
 1992: William Baier, Wayne, Ford; Amy Boecker, Wayne, Mercury; Harold Olson, Wayne, Chevrolet.
 1991: James Markham, Wayne, Dodge.
 1990: Thomas Baier, Wayne, Ford.
 1988: Bradley Stewart, Wayne, Ford; Robert Nelson, Wayne, Eagle.
 1987: Gene Lutt, Wayne, Buick; Mark Penlerick, Wayne, Plymouth; Phillip Janke, Wayne, Dodge; Mark Henning, Wayne, Honda.
 1984: James Fredrickson, Carroll, Datsun; Alexander Enthoven, Wayne, Chevrolet; Ron Kramer, Wakefield, Chevrolet; Donald Siefken, Wayne, Chevrolet.
 1982: Johnny Starks, Wayne, Oldsmobile.
 1979: Allan Sellin, Hoskins, Cadillac; Steve Oswald, Wakefield, Chevrolet.
 1978: Chuck Wells, Wakefield, Chevrolet; Terry Luhr, Wayne, Chevrolet.
 1977: Kenneth Elkins, Hoskins, Ford; Laverie McDonald, Wayne, Ford.
 1975: Roger Nelsen, Carroll, Chevrolet.
 1974: Byron Benstead, Wayne, Chevrolet; Lynn Heffrey, Wayne, Ford.
 1971: Rod Brogren, Winside, Chevrolet.

County Clerk
Real estate
 Feb. 18 — Wilbur and Phyllis Nolte to Kenneth A. and Richard J. Nolte, a tract of land in the northeast quarter of 5-26-4. D.S. \$1.50.
 Feb. 20 — Mavis J. Lutt to the Mavis J. Lutt Revocable Trust, the west half of the northwest quarter of 28-26-4; an undivided one-half interest in a tract of land in the south half of the southwest quarter of 21-26-4; and an undivided one-half interest in land in the northeast quarter of 36-26-3. D.S. exempt.
 Feb. 20 — Louis J. Lutt to the Louis J. Lutt Revocable Trust, the southeast quarter of 20-26-4; an undivided one-half interest in a tract of land in the south half of 21-26-4; and an undivided one-half interest in land in the northeast quarter of 36-26-3. D.S. exempt.
 Feb. 20 — Louis J. Lutt and Mavis J. Lutt to Louis J. Lutt, a tract of land in the south half of the southwest quarter of 21-26-4; and land in the northeast quarter of 36-26-3. D.S. exempt.
 Feb. 20 — Olyve Longe, P.R. to Olyve Longe, the southwest quarter of 5-25-5; an undivided one-half interest in the north half of the north half of the southwest quarter and the northwest quarter of the southeast quarter of 9-25-5; one-half interest in the north half of the northwest quarter of 7-25-5; and the northeast quarter of 7-25-5. D.S. exempt.
 Feb. 20 — Thomas E. and Margaret Mary McCright to the City of Wayne, lot 2, McCright's First Addition to the City of Wayne. D.S. exempt.
 Feb. 21 — Robert A. and Virginia A. Bathke and Gale Theo and Dennis M. Korth to John and Jacque Kinnett, the west half of lots 15 and 16 and the west half of the north 13 feet of lot 17, block 22, College Hill First Addition to the City of Wayne. D.S. \$37.50.
 Feb. 21 — Melvin R. and Joan M. Miller to Paul J. and Lyn N. Beltz, the east half of lot 7 and the east half of the south 40 feet of lot 8, block 1, North Addition to the City of Wayne. D.S. \$43.50.
 Feb. 21 — Thomas E. and Margaret Mary McCright to Spartan '88, lot 1, McCright's First Subdivision to the City of Wayne. D.S. \$112.50.
 Feb. 24 — Mima Norsworthy to Perry A. and Jean M. Jones, an undivided one-half interest in the northeast quarter of 11-26-1. D.S. \$78.

County Court
Traffic fines
 Douglas J. Martinson, Omaha, speeding, \$30; James H. Clark, Wakefield, speeding, \$30; Larry L. Brandstet-

ter, Red Oak, Iowa, speeding, \$30; Timothy R. Mulligan, Deloit, Iowa, speeding, \$30; Bryan A. Miller, South Sioux City, speeding, \$30; Brent K. Wine, Omaha, speeding, \$30; Joan T. Hoising, Carroll, speeding, \$30; Suzanne L. Sutton-Vermeulen, Mingo, Iowa, speeding, \$15; Rolando F. Rinaldi, Omaha, speeding, \$50; following too closely, \$25; Irene M. Meyer, Winside, speeding, \$30; Matthew L. Wehde, Wayne, speeding, \$50; Kent H. Larson, Norfolk, speeding, \$30; Jennifer L. Ehlers, Omaha, no valid registration, \$50; Connie J. Wortman, Lincoln, speeding, \$30; Matthew E. Flanigan, Sioux City, speeding, \$30; Teresa J. Barnett, Sioux Falls, S.D., dismissed; Glendon W. Meyer, Pender, no valid registration, \$50; Raymond D. Jensen, Wakefield, speeding, \$30; Larry L. Brodersen, Wayne, speeding, \$30; Robert Weatherly, Sioux City, speeding, \$30; Ricky L. Meyers, South Sioux City, speeding, \$30; Kenton D. Dausel, Battle Creek, Iowa, speeding, \$30; Kathryn A. Andrew, Norfolk, speeding, \$30; David E. Hartonstall, Galesburg, Ill., speeding, \$30; Russell L. Cooper, Omaha, speeding, \$30; Arnold R. Frahm, Norfolk, speeding, \$30; Don A. Seymour, Sioux City, speeding, \$30; Randy L. Belt, Wayne, no valid registration, \$50; Lee A. Jenkins, Columbus, speeding, \$15; Luis Deandamoren, Schuyler, speeding, \$30.

Civil Judgements
 Action Professional Services, plaintiff, against Patrick Smith, dismissed.
 Hawkeye Adjustment Service, plaintiff, against Matt Baier and Amy Baier, defendants, judgement for plaintiff in amount of \$1,590.
 Accent Service Company, Inc., plaintiff, against Jerry Jones and Kerri Lynn Jones, defendants, judgement for plaintiff in amount of \$1,597.11.
 Action Professional Services, plaintiff, against Charity Jacobsen, defendant, judgement for plaintiff in amount of \$0.00.
 Action Professional Services, plaintiff, against David Jasa, defendant, judgement for plaintiff in amount of \$35.80.
 Action Professional Services, plaintiff, against Dawn LaCroix, defendant, judgement for plaintiff in amount of \$31.64.
 Action Professional Services, plaintiff, against Jeff Sitzman, defendant, judgement for plaintiff in amount of \$0.00.
 Action Professional Services, plaintiff, against Tammy Warren, defendant, judgement for plaintiff in amount of \$0.00.
 Action Professional Services, plaintiff, against Sandra Peterson, defendant, judgement for plaintiff in amount of \$12.77.
 Action Professional Services, plaintiff, against Julie Starks, defendant, judgement for plaintiff in amount of \$34.21.

Civil filings
 Action Professional Services, plaintiff, against Nancy Johnson, defendant.
 Action Professional Services, plaintiff, against Connie Weyhrich, defendant.
 Action Professional Services, plaintiff, against Lisa McIntyre, defendant.
 Action Professional Services, plaintiff, against Deborah Holman, defendant.
 Action Professional Services, plaintiff, against Kelly Calhoun, defendant.

Small Claims filings
 Wayne Dental Clinic, plaintiff, against Chris Hessig, defendant.
 Wayne Dental Clinic, plaintiff, against John Frick, defendant.
 Doug Folkers d/b/a JAFF, plaintiff, against Dennis and Paddy Spangler, defendant.
 Tom's Body and Paint Shop, plaintiff, against Steve Sorensen, defendant.
 Tom's Body and Paint Shop, plaintiff, against Melinda Olson, defendant.
 Wayne Dental Clinic, plaintiff, against Kelly Frisch, defendant.

Preparing for tax season

Official: Review farm deductions

Farmers should be cautious when using section 179 of the federal tax form to claim a larger depreciation deduction on farm machinery in a single tax year to receive a larger federal tax deduction in 1991, said the director of farm management operations for the University of Nebraska Southeast-Research and Extension Center.

Using the section 179 expense deduction to generate a Schedule F loss might increase the self-employment social security tax paid by the operator in the future, Gary Bredensteiner said. Schedule F is a summary of farm income and expenses.

Due to tax code changes this

year, farmers with non-farm income to offset their farm income are more likely to benefit by using section 179, he said.

Before this year, Bredensteiner said, the section 179 deduction was limited to which one of the following produced the smallest dollar amount: the amount of the investment, \$10,000, or active trade or business income including off-farm income.

For the first time this year, non-farm income can be used to establish the taxable income limit, Bredensteiner said. Non-farm income includes wages, salaries and other compensation, as well as a spouse's income when a couple is married and filing jointly.

Passive income, such as interest, dividends or money earned from rental properties, cannot be used to establish the taxable income limit, Bredensteiner said. Farmers can apply unused section 179 expense deductions subject to the income limitation for the next tax year, he said.

For those that qualify, using this additional income limit would increase Schedule F expenses which might produce a Schedule F net loss, Bredensteiner said. This would lower Form 1040 adjusted gross income and current tax liability, he said.

Before deciding to use the section 179 expense deduction,

farmers should determine their current and future marginal tax rates, Bredensteiner said. Tax liabilities might be more in following years because there will be less depreciation to take in future years after using section 179, he said.

By speeding up asset depreciation through claiming a larger first-year depreciation deduction, the adjusted basis becomes less, Bredensteiner said. This will increase the taxable gain amount when the asset is sold.

Potential advantages and disadvantages of using the section 179 deduction should be discussed with a professional familiar with the person's tax situation, Bredensteiner said.

WSC hosts music fest

Approximately 500 high school students representing 11 choirs throughout Nebraska, Iowa and Minnesota will attend Wayne State College's 22nd annual High School Choir Clinic-Festival on Tuesday, March 3.

The public is invited to a performance where choirs will be performing as a massed choir and individually. Performance time is 2:30 p.m. in the Fine Arts Building's Ramsey Theatre. Seating is available in the balcony.

The 1992 Honor Choir is Anoka (Minn.) High School under the direction of Bruce Phelps and Michelle Stenzel.

The festival will provide an opportunity for high school singers to perform in both a massed choir and as individual choirs, according to Dr. Cornell Runestad, director of choral activities at Wayne State.

Crofton, Elgin Pope John, Oakland-Craig, Orchard, Pender, Stanton, Wakefield, Wayne, Wausa and West Point choirs will participate.

4-H News

MODERN M'S
 Members of the Modern M's 4-H Club met Feb. 20 and answered roll call with what they like most about winter.

Business included signing a card for the club's adopted grandmother at the care center. Members then split into committees and decided on special group activities.

The next meeting will be March 19.

HELPING HANDS

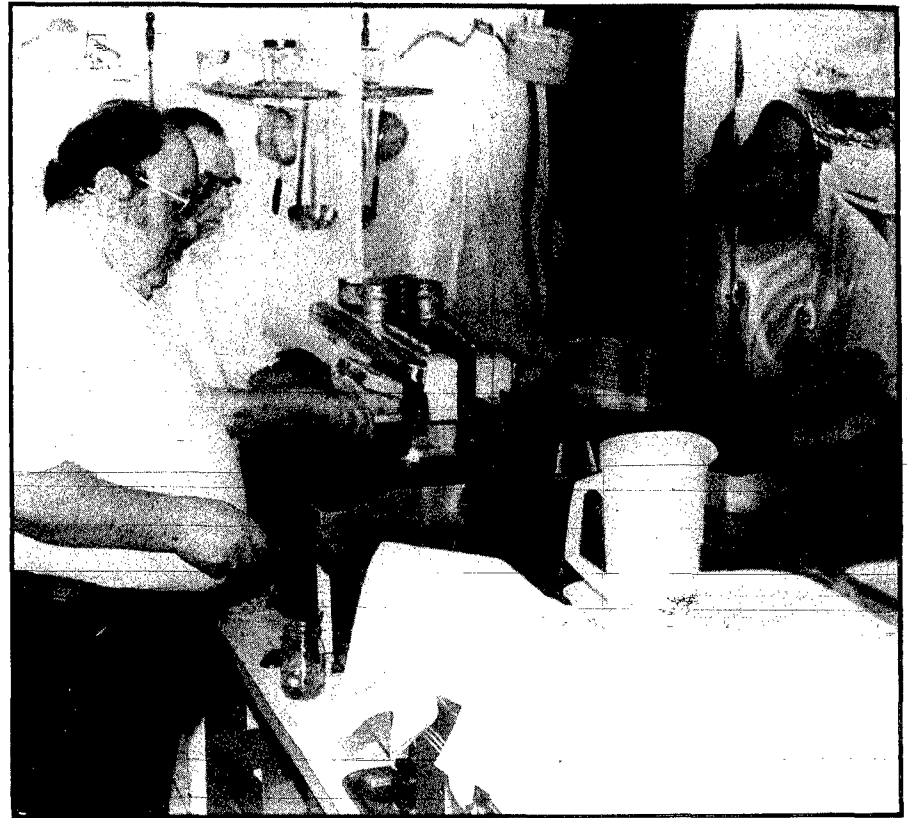
The Lon DuBois family hosted the Feb. 23 meeting of Helping Hands 4-H Club with eight members and three leaders present.

Ryan Brogren gave a report on "Pork — the Truth," and Laurel DuBois presented a demonstration on a new type of plastic made into jewelry.

The club made \$81.85 during the basketball bake sale. Seven girls will bake for Bake and Take Days on March 27-28.

The next meeting will be Houten 29 in the Dennis Van Mourthen home at 7 p.m. for a movie party. Nick Brogren and Mark Bloomfield will give demonstrations.

Mary Muhs, news reporter.



Photography: Mark Crist

Flipping 'cakes for VFW

WAYNE DENKLAU KEEPS A WATCHFUL eye on one of a number of pancakes he was cooking recently when the Wayne Veterans of Foreign Wars club held a pancake benefit. The benefit was held Sunday, Feb. 23 at the Wayne VFW and proceeds went to help various organization activities.

Stable milk prices expected for 1992

Average milk prices for dairy producers and consumers in 1992 should remain about the same as in 1991, according to a University of Nebraska-Lincoln dairy specialist.

Jeff Keown said surpluses will shrink in 1992 because of stable milk production and increased commercial milk sales in 1991 as well as government purchases of surplus milk and sales of milk products to other countries, including Mexico and the former Soviet Union.

The United States produced

148.5 billion pounds of milk in 1991, an increase of 0.1 percent from 1990's total of 148.3 billion pounds, he said.

The milk was produced by 9.99 million milk cows, 1.4 percent fewer than in 1990. Each cow produced an average of 14,868 pounds of milk, up 1.5 percent from 1990, the Institute of Agriculture and Natural Resources specialist reported.

Milk production figures for 21 reporting states in January 1992

showed that production increased 0.1 percent from January 1991, Keown said. Cow numbers in January 1992 decreased 2.4 percent compared to a year ago, an indication of continued heavy culling by producers.

Seventeen of the 21 reporting states has the same or fewer milk cows in January 1992 compared to January last year, Keown said. Four of these states, reported less milk production per cow.

WAYNE-CARROLL HIGH SCHOOL — WINSIDE HIGH SCHOOL

STUDENTS OF THE MONTH

We are proud to be a part of these Communities and recognize these students as our area's Number 1 resource.

Farmers & merchants
state bank of wayne
321 MAIN STREET - P.O. BOX 240
WAYNE, NEBRASKA 68787
402-375-2043

Wayne's Newest Banking Partner

"THE BANK WHERE YOU'RE SOMEBODY SPECIAL"

MEMBER FDIC

321 Main Street 375-2043

KATY ANDERSON

Katy is the daughter of Tom Anderson and Pat Malcolm. She is a senior at Wayne High School and will graduate in May as a member of the class of 1992. Katy's academic recognition earned to date includes: Honor Roll, Kiwanis scholar, academic letter award, Omaha World Herald Scholar and United States Achievement Academy Math Award. Katy is also involved in numerous activities, which include Varsity Band, President of the National Honor Society, Editor of the School Annual, President of the Spanish Club, Mock Trial Attorney, and Senior Band Representative. Her future plans are to study veterinary medicine.

WAYNE'S ENTERTAINMENT CONNECTION

120 WEST 3RD
WAYNE, NE.
375-1120

FIRST NATIONAL INSURANCE AGENCY

GARY BOEHLE & STEVE MUIR
Phone: 375-2511
Wayne, Nebraska

PATRICIA OBERLE

Patty is the daughter of Connie and Dwight Oberle of Winside. She is a senior at Winside High School and will graduate in the spring. Patty is on the Honor Roll and has participated in many academic contests. She is a member of the National Honor Society and serves as Editor of the School Year Book. Her favorite subjects in school are computer science and calculus. Patty has been active in athletics participating in volleyball, basketball, & track. Patty's hobbies include, road racing (bicycle & running), triathlons, B.R.A.N., Church Youth Group, & Tae Kwan Do Class. Upon graduation she would like to be a part of the Army National Guard and attend college, majoring in accounting.

FARMER'S CO-OP

• FEED • FERTILIZER
• FUEL • CHEMICALS

See us for all your needs!

PILGER
396-3414
WINSIDE
286-4277

Winside News

Dianne Jaeger
286-4504

PRISCILLA CIRCLE

St. Paul's Lutheran Church LWML Priscilla Circle met last Monday with eight members present and one guest. Jane Rademacher became a new member.

Leona Backstrom opened the meeting and the LWML Pledge was said in unison. Pastor Jeffrey Lee gave a prayer and the Bible study, "My Song is Love Unknown." Gertrude Heines gave devotions.

Leona handed out the standing rules and bylaws to be discussed next month. Gail Lee will attend the pastor's wives appreciation day in Gand Island. The District Convention will be held June 19-20 in Norfolk at Northeast. The spring workshop will be April 21 at Immanuel in Laurel. The fall rally will be at Wakefield St. Paul's.

Gloria Lessman informed them of a new program "Effective Society Planning."

The next meeting will be Monday, March 23 at 7:30 p.m.

GIRL SCOUTS

Winside Troop 179 Girl Scouts

met in the Legion Hall after school Feb. 26 to pick up girl scout cookies. They will be distributing them over the next two weeks.

The girls will make signs for Earth Day in Wayne March 12 at the college. The girls will retire the colors at the ceremony.

The next meeting will be Wednesday, March 4 in the fire hall.

Amy Hancock, reporter.

WORLD DAY OF PRAYER

Winside United Methodist Church will host the Friday, March 6 World Day of Prayer service at 2 p.m.

The program, "Living Wisely With Creation," written by women from Switzerland, Austria and Germany will be presented by church women of both the United Methodist and the Trinity Lutheran Church.

All women are invited to attend.

WEBELOS

The Webelo Cub Scouts met Tuesday with leader Joni Jaeger at the elementary school and practiced for the March 1 Blue and

Gold Banquet. Jeremy Jaeger and Sam Schrant gave a report on "sport official's signals." Jeremy served treats.

The next meeting will be tomorrow (Tuesday) after school at St. Paul's Church basement with Pastor Jeffrey Lee to work on their religious badge. Sam Schrant will bring treats.

TOPS

Members of TOPS NE 589 met Feb. 26 for their weekly meeting. The next meeting will be Wednesday, March 4 with Marian Iversen at 7 p.m. Election of officers will be held. Anyone wanting more information can call 286-4425.

SUMMER REC

There will be a summer recreation committee meeting tomorrow (Tuesday) in the high school library starting at 6:45 p.m. All parents of youth involved in any of the summer programs are invited to attend.

SENIORS

Twenty-one Winside area Senior Citizens met last Monday for a

noon carry-in potluck dinner. Cards were played afterwards. The next meeting will be today (Monday) at 2 p.m. All area senior citizens are invited to attend in the Legion Hall.

WILDCATS

Members of the Wild Cat Patrol Boy Scouts met Feb. 20 and reviewed their Board of Review for second class rank. They will meet again next Thursday at 7 p.m. in the fire hall.

Joshua Jaeger, scribe.

2-4-7 CLUB

Alva Farran hosted the Wednesday afternoon 2-4-7 Club with five members present. Leora Imel will host the March meeting.

BRIDGE CLUB

The Carl Troutmans hosted the Feb. 25 Tuesday Night Bridge Club with the Stanley Sodens as guests. Prizes were won by Clarence Pfeiffer and Mary Ann Soden. The next meeting will be Tuesday, March 10 at the George Voss home.

SCHOOL CALENDAR

Tuesday, March 3: Teacher Appreciation Day.

Carroll News

Kathy Hochstein
585-4729

STAR CLUB

The Star Extension Club met Feb. 19 at the home of Jackie Owens with 11 members present.

The meeting was conducted by Dorine Leidman, president. Roll call was "when did you have your last mamogram." Jackie Owens discussed the three articles, America-Rediscovered, U.S. Aid to Starving Soviets and Washington's Slaves. Doris Harmer read an article entitled, "Menopause - New Attitudes." Cynthia Puntney announced a meeting to be held in Wayne in March on recycling.

Dorothy Rees was in charge of the lesson on health and she brought her daughter, Holly Stoltenberg, as guest speaker. Mrs. Stoltenberg is a nuclear medicine technician at a Norfolk hospital. She showed films

that were taken with a gamma camera and explained how the patients are prepared to be filmed with this special camera. The meeting was closed with a Valentine exchange and lunch.

The next meeting will be tomorrow (Tuesday) at the home of Doris Leidman. The guest speaker, on the topic of wills and insurance, will be Steven R. Jorgensen, career agent with Wayne County Farm Bureau Insurance in Wayne.

BROWNIE TROOP

The Carroll Brownie Troop met Thursday. The girls are learning the ways they can recycle. Preparations are being made for their part in the "Save the Earth Rally" to be held in Wayne on March 12.

The girls are also preparing for Girl Scout Week, which is March 8-

14. This year the Girl Scouts are celebrating their 80th year. Sunday, March 8 is Girl Scout Sunday.

The Brownies will be delivering Girl Scout cookies that they took orders for, as the cookie shipment has arrived.

WAY OUT HERE CLUB

The Way Out Here Club met Tuesday at the home of Joy Magnusen, with six members and their husbands present for a card party.

A brief business meeting was held and roll call was a poem pertaining to February.

Those receiving prizes following the evening of cards were Mr. and Mrs. Les Menke, Mr. and Mrs. Merrill Baier and Mr. and Mrs. Glen Loberg.

The next meeting will be Tuesday, March 31 in the home of Elaine Menke.

SENIOR CITIZENS

The Carroll Senior Citizens met Monday afternoon at the fire hall. There were 14 present for the afternoon of cards. Prizes were won by Pauline Frink and Esther Batten. A carry-in lunch was served at the close of the afternoon.

The seniors will meet again today (Monday) with a carry-in lunch and Rhonda Sebade will be on hand for blood pressures.

YOUTH GROUP

The United Methodist Youth Group held their soup supper Sunday evening at the church. All members, their sponsor and Sandy Hall were on hand to serve the supper.

Wakefield News

Mrs. Walter Hale
287-2728

SENIOR CENTER

Winners at the card party held at the Wakefield Senior Citizens Center were Margaret Blohm, Verna Anderson and Rachel McCaw.

Coming Events

Monday, March 2: Men of the Laurel Senior Center come to play pool; chorus practice, 12:45 p.m.

Wednesday, March 4: Chimes practice, 12:45 p.m.

Thursday, March 5: Video, 12:45 p.m.

Menu

Monday, March 2: Pork cutlets, potatoes, carrots, waldorf salad, bread, apricots.

Tuesday, March 3: Breaded fish, stewed tomatoes, potato casserole, mixed fruit salad, bread, pudding.

Wednesday, March 4: Chili, salad bar, crackers, cookie.

Thursday, March 5: Hamburger steak, baked potato, green beans, cauliflower salad, bread, plums.

Friday, March 6: Ham balls, au gratin potatoes, mixed vegetables, jello with fruit, bread, cream puffs.

HEALTH CARE CENTER

Monday, March 2: Reading group, 9:30 a.m.; Fit as a Fiddle, exercise group, 10:15 a.m.; current events, 11:30 a.m.; AFRICA, a slide presentation by Esther Oberg, 2:30 p.m.

Tuesday, March 3: Reading by volunteer Eleanor Park, 9:30 a.m.; Fit as a Fiddle, exercise group, 10:15 a.m.; current events, 11:30 a.m.; crossword puzzle, 2:15 p.m.; Salem worship tape, 3:30 p.m.

Wednesday, March 4: Card playing, 9 a.m.; care plan conferences, 9:30 a.m.; Ray Petersen, Wayne, accordion music, 2:30 p.m.

Thursday, March 5: Men's Club, bowling alley, Wakefield, 9:30 a.m.; sing-along, with ladies from St. John's Lutheran Church, Wakefield, 9:30 a.m.; exercise group, 11 a.m.; current events, 11:30 a.m.; Cyril Hansen and Jay Morris, piano and organ music, 2:30 p.m.; soup supper, free will offering, 6-8 p.m., proceeds for medical equipment for care center.

Friday, March 6: Crafts, 8:30 a.m.; travellog, 10:15 a.m.; card playing, 1:15 p.m.; bingo, 2:30 p.m.

Saturday, March 7: VCR movie, 2:30 p.m.

Resident birthdays for the month of March are Flossie Wilson, March 1; Art Anderson, March 1; Teresa Baier, March 3; Effie Bowder, March 8; Lena Koch, March 16; Uneeta Kingsbury, March 20; Hilda Benston, March 20, 102 years old; Opal Allen, March 27; Carol Erwin, March 29; Warner Erlanson, March 29, 100 years old.

Wayne State College student is featured in national fitness magazine

Wayne State College student David Curley has co-authored an article appearing in the March issue of "Men's Fitness" magazine.

The article, "Back From the Void," relates Curley's strength in overcoming a near-fatal car acci-

dent more than 10 years ago that left him in a coma for nearly nine months.

Curley describes his rehabilitation process which eventually led to two bicycle trips across the United States, and one across western Canada.

BUSINESS & PROFESSIONAL DIRECTORY

ACCOUNTING

MAX KATHOL
Certified Public Accountant
104 West 2nd
Wayne, Nebraska
375-4718

CONSTRUCTION

OTTE
CONSTRUCTION COMPANY
•General Contractor
•Commercial •Residential
•Farm •Remodeling
East Highway 35
Wayne, NE 375-2180

FINANCIAL PLANNING

GEORGE PHELPS, CFP
JENNIFER PHELPS, M.B.A.
416 Main Wayne 375-1848
TOLL FREE 1-800-657-2123

INSURANCE

State National
Insurance Agency
Let us protect & service your insurance needs.
Mineshaft Mall - Wayne
Marty Summerfield
Work 375-4888 Home 375-1400

INDEPENDENT AGENT

DEPENDABLE INSURANCE
for all your needs call:
375-2696
PIA N.E. NEBRASKA
INS. AGENCY
Wayne 111 West 3rd

KEITH JECH

INSURANCE AGENCY
IF THINGS GO WRONG,
INSURANCE CAN HELP!
316 Main 375-1429 Wayne

FIRST NATIONAL

INS. AGENCY
Gary Beeble
Steve Muir
303 MAIN
WAYNE
PHONE:
375-2511

PLUMBING

For all your plumbing needs contact:
JIM SPETHMAN
375-4499
SPETHMAN
PLUMBING
WAYNE, NEBRASKA

REAL ESTATE

•Farm Sales •Home Sales
•Farm Management
MIDWEST
Land Co.
206 Main-Wayne-375-3385

SERVICES

WHITE HORSE
SHOE REPAIR & GAS STATION
502 MAIN ST.
WAYNE
Leatherwork
Shoe Repair
Men's &
Women's Hats
Same Day
Service
Quality Work at
Lowest Prices!

LUEDER'S G-MEN

REFUSE SERVICE
RESIDENTIAL PICKUP
\$11.00 a month
FREE GRASS PICK UP
FOR '92 MUST BE BAGGED
New customers must sign up in the next few months.
CALL CHRIS
375-3402
Send Payments to Box 275
Wayne, Nebraska 68787

COLLECTIONS

•BANKS •MERCHANTS
•DOCTORS •HOSPITALS
RETURNED CHECKS
ACCOUNTS
Action Credit Corporation
Wayne, NE 68787
(402) 375-4609

HEIKES

AUTOMOTIVE SERVICE
Major & Minor Repairs
•Automatic Trans. Repair
•Radiator Repairs
•24 Hour Wrecker Service
•Bodywork
419 Main Street Wayne
PHONE: 375-4385

MITCHELL

ELECTRIC
WAYNE
375-3566

Local student performs

Seven Wayne State College music students have been chosen to perform in the North Central Division of the American Choral Directors Association's Convention in Des Moines, Iowa, on March 7. Directing the Collegiate Honor Choir will be Ann Howard Jones, formerly an assistant to Robert

Shaw with the Atlanta Symphony Orchestra.

Wayne State's students will be part of 140 students chosen from colleges and universities throughout eight north central states.

Among the students performing will be Brett Fuehlberth, Wayne.

Three on UNK Deans List

Three students from the Wayne Herald coverage area attending the University of Nebraska-Kearney have been named to the Dean's List for the fall semester.

Those students are: Billy Langer, Carroll, majoring in Business Administration; Kandace Garwood, Wayne, undeclared; and Joel Pedersen, Wayne, biology.

To earn a place on the Dean's List, students must complete 12 or more credit hours with a grade point average of 3.5 or better on a 4.0 scale.

Among the Wayne Herald coverage area students named to the list Garwood was the only student to earn a perfect 4.0 grade point average.

HEALTH CARE DIRECTORY


Providence Medical Center
1200 PROVIDENCE ROAD • WAYNE, NEBRASKA 68787

To serve you better the following Out Patient Clinics, Services and/or Mobile Services are available at the Providence Medical Center in Wayne. For more information contact your local physician or Providence Medical Center (375-3800). Ask for either Louise Jenness, Joan West or Marcie Thomas.

OB/GYN Clinic - Raymond Schulte MD, Omaha
ORTHOPEDIC/SPORTS MEDICINE CLINIC - (NEW) Ronald Neumann MD, Omaha David Brown, MD, Omaha
ORTHOPEDIC CLINIC - David Meyer, Kearney
UROLOGY CLINIC - Cecil T. Bromfield MD, Lincoln
EARS/NOSE/THROAT CLINIC - Thomas J. Tegt MD, Lincoln
CARDIOLOGY CLINIC - J. T. Baller MD, Sioux City
Allan Manalan MD, Sioux City Diane Werth MD, Sioux City
William Warner MD, Sioux City
David Zuehike MD, Sioux City
Steve Zumbun MD, Sioux City
GASTROENTEROLOGY CLINIC - James Martje MD, Sioux City
ALLERGY CLINIC - (NEW) James Oggie MD, Sioux City
ONCOLOGY CLINIC - J.C. Michataik, MD, Sioux City
Michael Parva MD, Sioux City (NEW)
OPHTHALMOLOGY CLINIC - Steve Samuelson, MD, Fremont (NEW)

SERVICES:
Mammography / Radiology, Ultrasound, CT scan (mobile) - Sister Kevin Hermen RRT - Robert Walker, MD Chief Radiologist
Physical Therapy (full time) - Diane Peterson, RPT
Cardiac Rehabilitation - Terri Munter, RN - Pam Matthes, RN
Dietitian - Kristin Holmes, RD
Life Line - Sister Monica Backes RN
Speech Therapy Michele Dudley, SLP, Norfolk
Hospice - Wanda Kucera
Laboratory - 24 hour service, Elizabeth Mohr, ASCP - John Scott MD, Supervisor
Home Health Care - Terri Munter, RN - Donna Jacobsen, LPN - Kathy Geier, RN
Ambulance Service - Louise Jenness, RN
Social Service Coordinators - Wertyn Anderson, RN & Joan West, LPN
ECHOCARDIOGRAPHY - VEMOUS & CAROTID DOPPLER
LOCAL PHYSICIANS - Robert Benthack MD - Benjamin Martin MD - Willie Wiseman MD - James Lindau MD - Dave Felber MD
Physician's Assistant - Gary West, PAC
OTHER SPECIALISTS - OB/GYN - Keith Vrbicky MD, Norfolk
GENERAL SURGERY - Gordon Adams MD, Norfolk

ALL I KNOW OF TOMORROW IS THAT PROVIDENCE WILL RISE BEFORE THE SUN



DENTIST

WAYNE DENTAL CLINIC
S.P. BECKER, D.D.S.
611 North Main Street
Wayne, Nebraska
Phone: 375-2889

PHARMACIST

WILL DAVIS, R.P.
375-4249
SAV-MOR PHARMACY
Phone 375-1444

OPTOMETRIST

WAYNE VISION CENTER
DR. DONALD E. KOEBER
OPTOMETRIST
313 Main St.
Phone 375-2020 Wayne, NE

PHYSICIANS

BENTHACK CLINIC
Robert B. Benthack, M.D.
Benjamin J. Martin, M.D.
Gary J. West, P.A.C.
215 West 2nd Street
Wayne, Nebraska
Phone: 375-2500

FAMILY VISION CENTER

Quality & Complete Vision Care
818 Ave. E
Wisner, Nebraska
529-3558

NORFOLK MEDICAL GROUP, P.C.

900 Norfolk Avenue
402 / 371-3160
Norfolk, Nebraska

General Surgery: G.D. Adams, M.D., FACS; D.F. Hehner, M.D., FACS. Pediatrics: R.P. Volta, M.D., FAAP; D. Blumen Berg, M.D., FAAP; Family Practice: T.J. Biga, M.D.; L.G. Handke, M.D.; W.F. Becker, M.D., FAAP; F.D. Dozon, M.D. Internal Medicine: W.J. Lear, M.D., D. Dudley, M.D.; Psychiatry: V. Canganelli, M.D.

Satellite Clinics - Pierce-Madison-Stanton

WAYNE FAMILY PRACTICE GROUP P.C.
Willis L. Wiseman, M.D. James A. Lindau, M.D.
Dave Felber, M.D.
214 Pearl Street Wayne, NE 375-1600
Hours: Monday-Friday 8-12 & 1:30-4:30, Saturday 8-12

THE HAND THAT ROCKS THE CRADLE
Nightly 7:15 Fri Sat Tue 9:30 Bargain Tue all seats \$2.50 Bargain Sun Matinee 2 pm

THE PRINCE OF TIDES
BARBRA STREISAND
NICK NOLTE
Nightly at 7:15 Fri Sat Tue 9:30 Bargain Tue all seats \$2.50 Bargain Sun Matinee 2 pm

Come join us for dinner. We're open every night with a special you will enjoy!
MON. NIGHTS THRU THURS. NIGHTS - STEAK & 21 SHRIMP\$7.95
FRIDAY NIGHTS - PETITE FILET MIGNON.....\$8.95
SATURDAY NIGHTS - PRIME RIB & 3 LARGE SHRIMP.....\$10.95
OR 18 OZ. T-BONE.....\$11.95
SUNDAY NIGHT - PORK CHOPS, 1 CHOP.....\$6.75
2 CHOPS.....\$7.95
All dinners include salad bar, choice of potato and texas toast.
SUNDAY BUFFET - Serving from 11 am to 2 pm includes 3 meats, potato, salad bar and dessert - \$4.95.

HUNGRY'S
BREWERY STEAKHOUSE & LOUNGE
STANTON, NEBRASKA 439-9998
Decide for yourself, steaks just don't come any better, anywhere!

SPECIAL NOTICE

PUBLISHER'S NOTICE: All real estate advertised in this newspaper is subject to the Federal Fair Housing Act of 1968 which makes it illegal to advertise "any preference, limitation, or discrimination based on race, color, religion, sex, or national origin, or an intention to make any such preference, limitation, or discrimination." This newspaper will not knowingly accept any advertising for real estate which is in violation of the law. Our readers are informed that all dwellings advertised in this newspaper are available on an equal opportunity basis.

FOR RENT

FOR RENT: Two - 1 bedroom apartments. Stove, refrigerator, water and garbage pickup furnished. No steps, low utilities. Rent based on income. Elderly, non-elderly, handicapped or disabled may apply.

Call 375-2322 or 1-800-762-7209.



PERSONAL

Single & Pregnant?
You don't have to go it alone.
We're here to help.
No fees / confidential counseling
State wide - since 1893

Nebraska Children's Home Society
Teri Wendel
1909 Vicki Lane Suite 101
Norfolk, NE 379-3378

CARDS OF THANKS

WHAT IS A Friend? A friend is a person who shares all your glad times, laughs with you and helps you through the difficult times as when I had surgery at St. Lukes and since I returned home. That is the best way to describe my wonderful family and my very dear friends. Thank you everyone for the cards, gifts, flowers, phone calls, visits and the food brought to the house. A special thank you to Pastor Don Nunnally for his visits, prayers and phone calls. The kindness of all will never be forgotten. God bless all of you. Viola Morris.

SERVICES

A COLLEGE student interested in afternoon, evenings and weekend babysitting jobs. Please give Missy a call at 375-3359. F244

ARENS STUMP REMOVAL. Free estimates. Alvin Arens, 379-3015. Norfolk, NE. F1042

CLASSIFIED ADS
Standard Ads
25¢ A Word
Display Ads
\$3.71 Per Column Inch

Legal Notices

INVITATION TO BID
Separate Sealed BIDS for the construction of WATER LINE RELOCATIONS. The proposed work will consist of furnishing and installing, complete and ready for operations, all necessary facilities as covered in the Drawings and Specifications.

CONTRACT 1 - WATER LINE RELOCATIONS
The work includes:
CONTRACT 1 - Approximately 4 miles of pipeline and appurtenances.
Sealed BIDS shall be received by Rural Water District No. 1 until 2:00 o'clock P.M. local time on March 24, 1992 at the Municipal Building, Beemer, Nebraska and then at said time and place, publicly opened and read aloud.

Each bidder shall file with his bid a Cashier's Check, Certified Check or an acceptable Bid Bond in the amount of 5% of the total amount of his bid.
The CONTRACT DOCUMENTS may be examined at the following locations:
Office of the Owner, Beemer, Nebraska
Office of the Engineer, Topeka, Kansas
The CONTRACT DOCUMENTS may be obtained at the office of BARTLETT & WEST ENGINEERS, INC., 5835 SW 28th Street, Topeka, KS 66614 upon RECEIPT of Fifty Dollars (\$50.00) for each set. NO REFUNDS will be made.

BIDS received after the stipulated closing time will be returned unopened. The BIDDER to whom the contract is awarded shall be required to furnish a Performance Bond acceptable to the Owner in the amount of 100% of the contract in conformity with the requirements of the Contract Documents. No BID may be withdrawn within a period of thirty (30) days from the date of receiving bids. The District has the right to reject any or all bids and to waive informalities or irregularities therein and to reject any bid where there is doubt as to the BIDDER having acquainted himself thoroughly with the materials and conditions relative to the job. The Contract will be let to the lowest responsible bidder.

Rural Water District No. 1
Cuming County, Nebraska
PO Box 181 - West Hwy. 275
Beemer, Nebraska 68716
(Publ. March 2, 9, 16, 23)

ORDINANCE NO. 92-07
AN ORDINANCE TO DIRECT THE SALE OF THE NORTH EIGHTEEN FEET (18') OF EAST SIXTH STREET ABUTTING LOT ONE (1) OF THE BLK AT OF MCCRIGHT'S FIRST SUBDIVISION TO WAYNE COUNTY, NEBRASKA. BE IT ORDAINED by the Mayor and Council of the City of Wayne, Nebraska:

Section 1. The Mayor and Council are directed to convey by warranty deed to Spartan '89, a Limited Partnership of Norfolk, Nebraska, the property owned by the City and legally described as:
Beginning at the Southwest Corner of Lot One (1), Replat of McCright's Subdivision of the City of Wayne, Nebraska, a part of the Northeast Quarter of Section Eighteen, Township Twenty-Six North, Range Four East of the 6th P.M., Wayne County, Nebraska, and assuming the west line of said replat to have a bearing of S0° 03'57"E; thence S0° 03'57"E, 18.00 feet; thence N89° 57'47"E, 143.37 feet to a point, said point being the start of a 50 foot radius curve concave northwesterly (having a chord bearing of N44° 57'09"E, and a chord distance of 70.75 feet); thence N0° 00'00"E, 18.00 feet to a point of a 50 foot radius curve concave northwesterly (having a chord bearing of S44° 57'09"W, and a chord distance of 70.75 feet); thence S89° 57'47"W along the south line of said Lot One (1), 143.50 feet to the point of beginning.

for the sum of One Dollar (\$1.00) cash, and other valuable consideration.
Section 2. Notice of the sale and the terms contained in Section 1 shall be published for three consecutive weeks in the Wayne Herald, provided that if a remonstrance against said sale signed by legal electors thereof equal in number to 30% of the electors of the City voting at the last regular municipal election held therein, be filed with the governing body within thirty days of the passage and publication of this ordinance, said property shall not then, nor within one year thereafter, be sold.

Section 3. This ordinance shall take effect and be in full force from and after its passage, approval and publication according to law.
PASSED AND APPROVED this 25th day of February, 1992.
THE CITY OF WAYNE, NEBRASKA,
By (s) Robert A. Carhart
Mayor

ATTEST:
Carol J. Brummond, CMC
City Clerk
(Publ. March 2)

Deadline for all legal notices to be published by The Wayne Herald is as follows: 5 p.m. Monday for Thursday's paper and 5 p.m. Thursday for Monday's paper.

NOTICE TO SELL REAL ESTATE
Notice is hereby given that the City of Wayne proposes to sell the real estate described as:

Beginning at the Southwest Corner of Lot One (1), Replat of McCright's Subdivision of the City of Wayne, Nebraska, a part of the Northeast Quarter of Section Eighteen, Township Twenty-Six North, Range Four East of the 6th P.M., Wayne County, Nebraska, and assuming the west line of said replat to have a bearing of S0° 03'57"E; thence S0° 03'57"E, 18.00 feet; thence N89° 57'47"E, 143.37 feet to a point, said point being the start of a 50 foot radius curve concave northwesterly (having a chord bearing of N44° 57'09"E, and a chord distance of 70.75 feet); thence N0° 00'00"E, 18.00 feet to a point of a 50 foot radius curve concave northwesterly (having a chord bearing of S44° 57'09"W, and a chord distance of 70.75 feet); thence S89° 57'47"W along the south line of said Lot One (1), 143.50 feet to the point of beginning, to Spartan '89, a Limited Partnership of Norfolk, Nebraska, for the sum of One Dollar (\$1.00) cash and other valuable consideration.
Carol J. Brummond, CMC
Wayne City Clerk
(Publ. March 2, 9, 16)

NOTICE OF PUBLICATION OF ORDINANCE NO. 92-08 OF THE CITY OF WAYNE, NEBRASKA IN PAMPHLET FORM

Public Notice is hereby given that the Mayor and City Council of the City of Wayne, Nebraska, at a meeting held at 7:30 P.M. on February 25, 1992 passed Ordinance No. 92-08 amending Section 7-201, regarding the Life Safety Code, Sections 9-201 and 9-201.01, regarding the Building Code and Permit Fees, Section 9-401, regarding the Plumbing Code, and to amend Section 9-501, regarding the Electrical Code of the Code of the City of Wayne, Nebraska and to repeal the original Sections.

Said Ordinance is published in pamphlet form and copies of said Ordinance as published in such pamphlet form are available for inspection at the office of the City Clerk at the City Hall.

Dated this 28th day of February, 1992.
Carol J. Brummond, CMC
City Clerk
(Seal) (Publ. March 2)

NOTICE OF SPECIAL MEETING

The Wayne Board of Education will meet in executive session at 7:30 P.M. on Thursday, March 5, 1992, at the high school, located at 611 West 7th Street, Wayne, Nebraska. The purpose of the meeting is to discuss personnel.
Doris Danleis, Secretary
(Publ. March 2)

NOTICE OF MEETING
Notice is hereby given that the Planning Commission of the City of Wayne, Nebraska, will meet in regular session on Monday, March 2, 1992, at 7:30 p.m., in the City Hall. Said meeting is open to the public and the agenda is available at the office of the City Clerk.
Carol Brummond, City Clerk
Wayne Planning Commission
(Publ. March 2)

IN THE COUNTY COURT OF WAYNE COUNTY, NEBRASKA
Case No. AD 92-1

IN THE MATTER OF THE ADOPTION OF KELSEY ANN OETKEN, A Minor Child.
Notice is hereby given that a Petition for Adoption of Kelsey Ann Oetken by Scott Charles Oetken was filed on the 18th day of February, 1992, in the Wayne County Court, Wayne, Nebraska. This matter has been set down for hearing before said Court in the county courtroom of the Wayne County Courthouse in Wayne, Nebraska, on the 26th day of March, 1992, at 1:00 o'clock p.m. or as soon thereafter as the same may be heard.
Dated this 18th day of February, 1992.
M. Theresa Milner
Attorney for Petitioners
(Publ. Feb. 24, March 2, 9)
1 clip

NOTICE
IN THE COUNTY COURT OF WAYNE COUNTY, NEBRASKA.
Estate of Edna B. Kramer, Deceased.
Estate No. PR92-5.

Notice is hereby given that a Petition for Probate of Will of said Deceased, Determination of Heirs and Appointment of Marvin Kramer as Personal Representative has been filed and is set for hearing in the County Court of Wayne County, Nebraska, located at Wayne, Nebraska, on March 12, 1992 at or after 1:00 o'clock p.m.
Marvin Kramer
Petitioner
Kenneth M. Olds
(Publ. Feb. 24, March 2, 9)
8 clips


HELP WANTED

POOL LIFEGUARDS WANTED
The City of Wayne is now accepting applications for Pool Lifeguards for the 1992 summer season. The successful applicant must show that they have a good work record and that they are dependable and mature in their work habits. Required Water Safety Instructor, Standard First Aid, Advanced Lifesaving and CPR certifications. Applications may be obtained at City Hall, 306 Pearl Street. Persons interested should submit their application to the Personnel Office no later than March 5th.

AN UNCOMMON OPPORTUNITY

Looking for a change but feel you don't have the experience necessary for a new beginning? Schwan's Sales, offers a unique opportunity to earn a high income. We're a national frozen food distributor seeking self-motivated individuals to train as ROUTE SALESPEOPLE.

Our Benefit Package includes:
*Excellent advancement opportunities
*Insurance *Profit Sharing
*No Investment *Paid Training.
Must be at least 21 years old and have a good driving/employment record.
Interested? For an appointment, call 1-800-336-7569.



Equal Opportunity Employer M/F

SALES CAREER MANAGEMENT OPPORTUNITY

FARM MARKET

1. Are you really making it?
2. Are your goals being met?
3. Are you really happy?

If not, pay close attention

We have an outstanding opportunity in Nebraska for the right individuals. Our national company has been in business over 15 years averaging a 46% growth per year. Our people are extremely successful with a first year income potential of \$2K plus.

WE OFFER:
*An exclusive proven-to-sell product
*Intense company training and support
*Qualified \$1,500 first month income guarantee
*Many bonuses and incentives
*Overnight travel 4 nights a week in Nebraska
*Friday, Saturday, Sunday your free time

For more information and to schedule an interview in Grand Island, call:
Mark Headrick
Sunday, Monday or Tuesday
402-488-9135
Interviews will be conducted March 13, in Grand Island.
INTER-STATE SERVICE
Equal Opportunity Company

FOR SALE
2 year old Sheltie male, has current shots, AKC registered. Call 375-1658. F617

FOR SALE: 1982, 1100 Honda Goldwing. Full dress, excellent condition. Phone 585-4522 after 5 p.m. M2

FOR SALE in Winside 14x80 Bonneville with lot and extras. 375-1172 after 8 p.m. M24

TO GIVE AWAY

FARM DOG to give away. 18 months Collie/Shepherd female. Strictly an outside dog. Insulated dog house. Needs room to run. Call 375-3305. F17

WANTED

OLD ORIENTAL RUGS. Wanted any size or condition. Call 1-800-443-7740. F177

REAL ESTATE UPDATE

NEW LISTING
Energy efficient, 2+1 bdrm, newer split foyer, oak woodwork & 1 car attached garage in Laurel.....\$59,500

3 + 1 Bdrm ranch, family room, wood stove, charming oak kitchen, fenced yard, walk-out basement, 2 car garage.....\$74,500

10,000 Sq. Ft. RESIDENTIAL LOT
Sewer, water, & street provided
\$13,950

COMMERCIAL LOTS
Two large lots on East Highway 35

2 - 3 Bedroom ranch, fireplace, built-ins, close to school.....\$37,500

2 + 1 bdrm, split foyer, FR, Cathedral Ceilings, 2 bath, 2 car attached garage, in Mile Acres.....\$48,500

TWO 1.2 ACRE LOTS
in South West part of Wayne for residential development
— \$9,000 ea. —

MIDWEST Land Co.
206 Main - Wayne, NE.
375-3385

TERI HIGBEE
ASSOCIATE BROKER

ASSISTANT POOL MANAGER WANTED
The City of Wayne is now accepting applications for Assistant Pool Manager for the 1992 summer season. The successful applicant must show that they have a good work record and that they are dependable and mature in their work habits. Pool operator certification required. Previous life guard experience preferred. Applications may be obtained at City Hall, 306 Pearl Street. Persons interested should submit their application to the Personnel Office no later than March 5th.

OCCUPATIONAL HEALTH NURSE

IBP, Inc., the nation's largest processor of fresh beef and pork is currently seeking a qualified RN for a day time position working in our Health Services Department at our West Point, Nebr. beef facility. The medical professional chosen for this position will be responsible for all facets of occupational medicine including pre-employment physicals, first-aid treatment, hearing tests, ergonomic training, OSHA record keeping, workers' compensation, and employee insurance.

We offer an excellent benefit package that includes:
*INSURANCE BENEFITS for you and your family.
*SAVINGS and RETIREMENT.
*CASH BONUS dependent upon personal performance.
*PROFIT SHARING based upon company profits.
*COMPETITIVE SALARY commensurate with experience.

If you are interested in joining an industry leader contact:

ibp. IBP, Inc.
c/o Personnel Manager
RR #3 Box #57
WEST POINT, NE 68788
(402) 372-5401
EOE M/F

PRODUCTION WORKERS

IBP, Inc. is currently accepting applications for Production Workers at its West Point, Nebraska, beef facility. Experience is desirable, but not required (training is provided). Successful applicants must have a good work history, and a strong willingness to work.

WE OFFER:
*Full time employment
*Starting rate of \$7.00 per hour with a .20¢ increase every 90 days up to a base of \$8.15/hour
*Quick Start - qualified employees can by-pass the progression and earn up to \$8.15/hour plus skill pay.
*Guaranteed 40 hour work week
*Medical/Dental/Vision & Life Insurance Available
*Savings and Retirement
*Paid Holidays & Vacation
*Advancement Opportunities

If you're looking for full time, permanent employment and meet the criteria above, then we're looking for hard working people just like you.

Apply in person at:
WEST POINT PLANT PERSONNEL OFFICE
Monday-Friday, 8:00 A.M.-4:00 P.M. EOE M/F

ibp.
West Point, NE 68788

The Big Dipper

Del Sandwiches	Regular	Large
#1. Spiced Ham, Cooked salami, Cheese	\$2.20	\$4.30
#2. Ham, Salami, Cheese	\$2.35	\$4.55
#3. Pastrami, Salami, Cheese	\$2.55	\$4.95
#4. Roast Beef, Cheese	\$2.55	\$4.95
#5. Turkey, Cheese	\$2.30	\$4.50
#6. Ham, Cheese	\$2.20	\$4.30
#7. Ham, Turkey, Cheese	\$2.45	\$4.75
#8. All Cheese	\$2.10	\$3.90
#9. Spiced Ham, Salami, Turkey, Ham, Pastrami, Cheese	\$3.35	\$6.30

DELIVERY TIMES 11 AM TO 1 PM MON. THRU SAT. FREE DELIVERY!

Buy 1 regular Sandwich & receive the second one for 99¢
EXPIRES 3/12/92

1308 MAIN STREET WAYNE, NE 375-2633

10¢ OFF ANY GALLON OF MILK EXPIRES 3/8/92